

CLUAP1 Antibody



PACO38414

Product Information

Size:

50ug

Reactivity:

Human

Source:

Rabbit

Isotype:

IgG

Applications:

ELISA, IHC

Recommended dilutions:

ELISA:1:2000-1:10000, IHC:1:20-1:200

Protein Background:

Required for cilia biogenesis. Appears to function within the multiple intraflagellar transport complex B (IFT-B). Key regulator of hedgehog signaling.

Gene ID:

CLUAP1

Uniprot

Q96AJ1

Synonyms:

Clusterin-associated protein 1 (Qilin), CLUAP1, KIAA0643

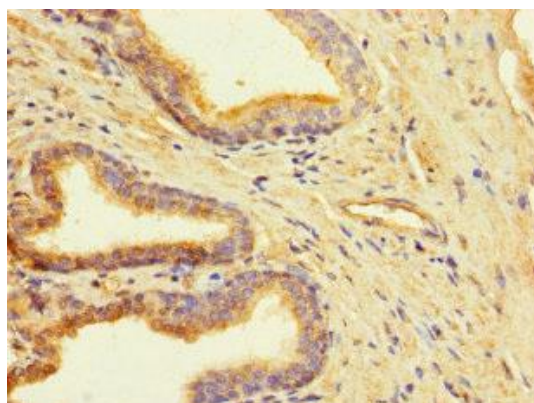
Immunogen:

Recombinant Human Clusterin-associated protein 1 protein (161-413AA).

Storage:

Preservative: 0.03% Proclin 300. Constituents: 50% Glycerol, 0.01M PBS, PH 7.4

Product Images



Immunohistochemistry of paraffin-embedded human prostate cancer using PACO38414 at dilution of 1:100.