

SUSD6 Antibody



PACO38390

Product Information

Size:

50ug

Reactivity:

Human

Source:

Rabbit

Isotype:

IgG

Applications:

ELISA, IHC, IF

Recommended dilutions:

ELISA:1:2000-1:10000, IHC:1:20-1:200,
IF:1:50-1:200

Protein Background:

May play a role in growth-suppressive activity and cell death. May be involved in the production of chemokine molecules in umbilical vein endothelial cells (HUVECs) cultured in THP1 monocyte LPS-induced medium. Plays a role in preventing tumor onset.

Gene ID:

SUSD6

Uniprot

Q92537

Synonyms:

Sushi domain-containing protein 6 (Drug-activated gene overexpressed protein), SUSD6, DRAGO KIAA0247

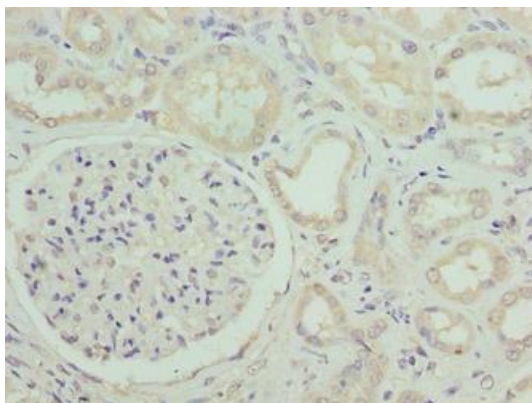
Immunogen:

Recombinant Human Sushi domain-containing protein 6 protein (144-303AA).

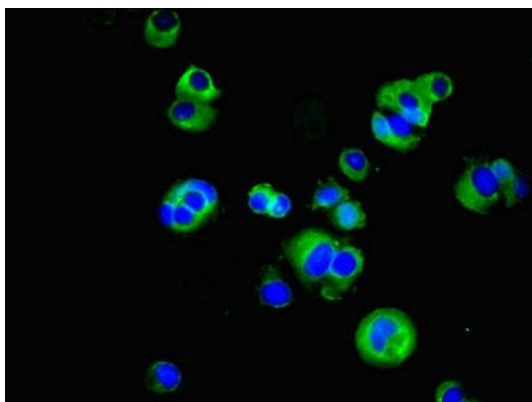
Storage:

Preservative: 0.03% Proclin 300. Constituents: 50% Glycerol, 0.01M PBS, PH 7.4

Product Images



Immunohistochemistry of paraffin-embedded human kidney tissue using PACO38390 at dilution of 1:100.



Immunofluorescent analysis of MCF-7 cells using PACO38390 at dilution of 1:100 and Alexa Fluor 488-conjugated AffiniPure Goat Anti-Rabbit IgG(H+L).