

C2orf15 Antibody



PACO38362

Product Information

Size:

50ug

Reactivity:

Human

Source:

Rabbit

Isotype:

IgG

Applications:

ELISA, WB, IHC

Recommended dilutions:

ELISA:1:2000-1:10000, WB:1:500-1:2000,
IHC:1:20-1:200

Protein Background:

poly(A) RNA binding.

Gene ID:

C2orf15

Uniprot

Q8WU43

Synonyms:

Uncharacterized protein C2orf15, C2orf15

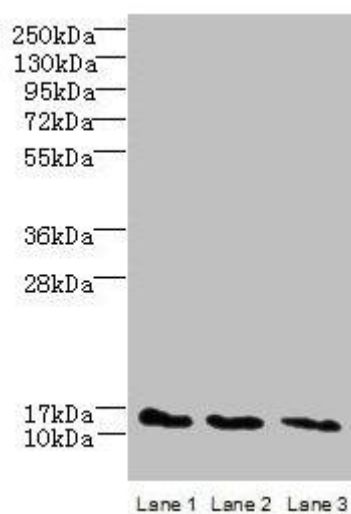
Immunogen:

Recombinant Human Uncharacterized protein C2orf15 protein (1-125AA).

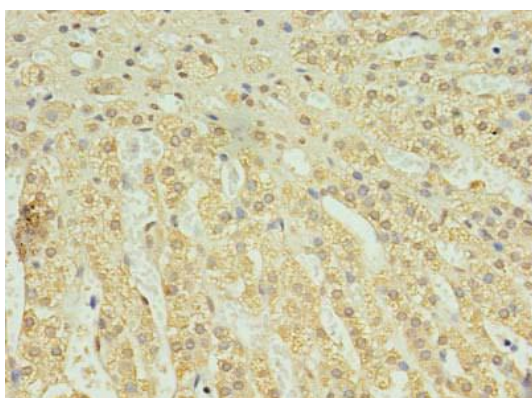
Storage:

Preservative: 0.03% Proclin 300. Constituents: 50% Glycerol, 0.01M PBS, PH 7.4

Product Images



Western blot. All lanes: C2orf15 antibody at 6 μ g/ml. Lane 1: U251 whole cell lysate. Lane 2: MCF-7 whole cell lysate. Lane 3: HCT116 whole cell lysate. Secondary. Goat polyclonal to rabbit IgG at 1/10000 dilution. Predicted band size: 14 kDa. Observed band size: 14 kDa.



Immunohistochemistry of paraffin-embedded human adrenal gland tissue using PACO38362 at dilution of 1:100.