

# TCP10L Antibody



PACO38350

---

## Product Information

**Size:**

50ug

**Reactivity:**

Human

**Source:**

Rabbit

**Isotype:**

IgG

**Applications:**

ELISA, IHC

**Recommended dilutions:**

ELISA:1:2000-1:10000, IHC:1:20-1:200

**Protein Background:**

May be involved in transcriptional regulation. Has in vitro transcription inhibition activity. Acts as a tumor suppressor in hepatocellular carcinoma (HCC) cells.

**Gene ID:**

TCP10L

**Uniprot**

Q8TDR4

**Synonyms:**

T-complex protein 10A homolog 2 (T-complex protein 10A-2) (TCP10A-2) (TCP10-like), TCP10L

**Immunogen:**

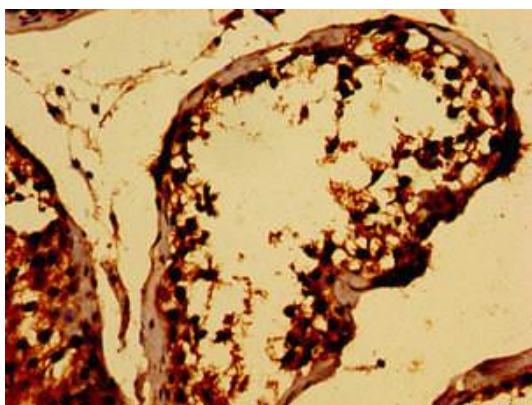
Recombinant Human T-complex protein 10A homolog 2 protein (1-215AA).

**Storage:**

Preservative: 0.03% Proclin 300. Constituents: 50% Glycerol, 0.01M PBS, PH 7.4

## Product Images

---



Immunohistochemistry of paraffin-embedded human testis tissue using PACO38350 at dilution of 1:100.