

LRRC20 Antibody



PACO38342

Product Information

Size:

50ug

Reactivity:

Human, Mouse

Source:

Rabbit

Isotype:

IgG

Applications:

ELISA, WB, IHC

Recommended dilutions:

ELISA:1:2000-1:10000, WB:1:1000-1:5000,
IHC:1:20-1:200

Protein Background:

Gene ID:

LRRC20

Uniprot

Q8TCA0

Synonyms:

Leucine-rich repeat-containing protein 20, LRRC20

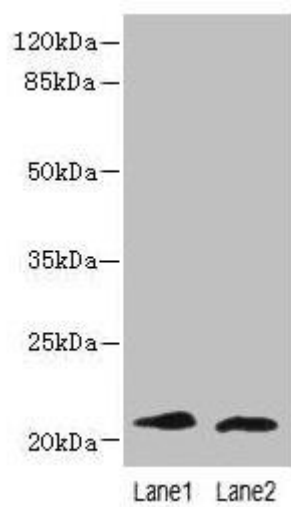
Immunogen:

Recombinant Human Leucine-rich repeat-containing protein 20 protein (1-184AA).

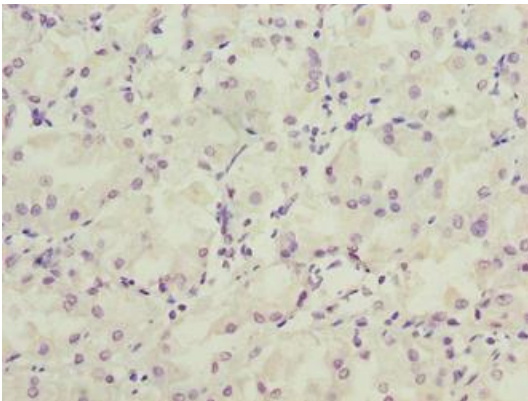
Storage:

Preservative: 0.03% Proclin 300. Constituents: 50% Glycerol, 0.01M PBS, PH 7.4

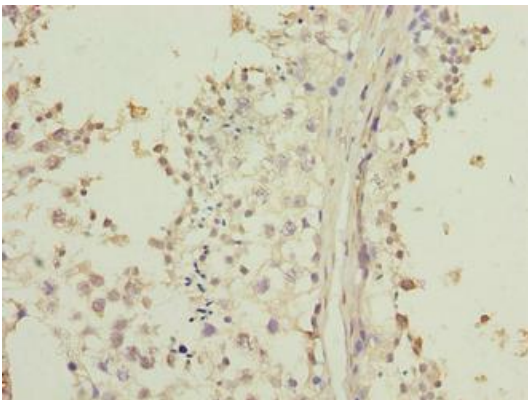
Product Images



Western blot. All lanes: LRRC20 antibody at 1 μ g/ml. Lane 1: Jurkat whole cell lysate. Lane 2: Mouse spleen tissue. Secondary: Goat polyclonal to rabbit IgG at 1/10000 dilution. Predicted band size: 21, 15 kDa. Observed band size: 21 kDa.



Immunohistochemistry of paraffin-embedded human gastric cancer using PACO38342 at dilution of 1:100.



Immunohistochemistry of paraffin-embedded human testis tissue using PACO38342 at dilution of 1:100.