

DBF4B Antibody



PACO38330

Product Information

Size:

50ug

Reactivity:

Human

Source:

Rabbit

Isotype:

IgG

Applications:

ELISA, WB, IHC

Recommended dilutions:

ELISA:1:2000-1:10000, WB:1:500-1:2000,
IHC:1:20-1:200

Protein Background:

Regulatory subunit for CDC7 which activates its kinase activity thereby playing a central role in DNA replication and cell proliferation. Required for progression of S and M phases. The complex CDC7-DBF4B selectively phosphorylates MCM2 subunit at 'Ser-40' and then is involved in regulating the initiation of DNA replication during cell cycle.

Gene ID:

DBF4B

Uniprot

Q8NFT6

Synonyms:

Protein DBF4 homolog B (Activator of S phase kinase-like protein 1) (ASK-like protein 1) (Chiffon homolog B) (Dbf4-related factor 1), DBF4B, ASKL1 DRF1

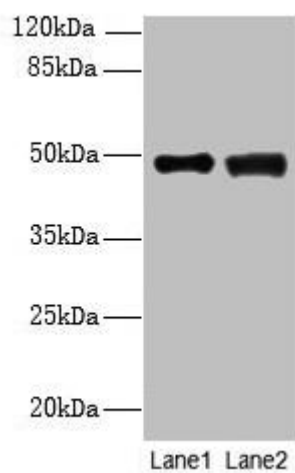
Immunogen:

Recombinant Human Protein DBF4 homolog B protein (1-300AA).

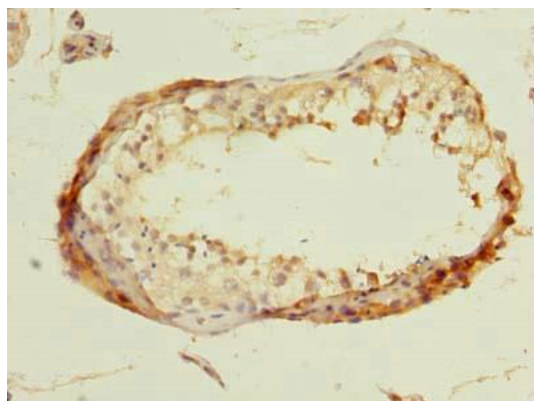
Storage:

Preservative: 0.03% Proclin 300. Constituents: 50% Glycerol, 0.01M PBS, PH 7.4

Product Images



Western blot. All lanes: DBF4B antibody at 4 μ g/ml. Lane 1: MCF-7 whole cell lysate. Lane 2: A549 whole cell lysate. Secondary. Goat polyclonal to rabbit IgG at 1/10000 dilution. Predicted band size: 68, 48, 55, 19 kDa. Observed band size: 48 kDa.



Immunohistochemistry of paraffin-embedded human testis tissue using PACO38330 at dilution of 1:100.