

Product Information

Size:

50ug

Reactivity:

Human

Source:

Rabbit

Isotype:

IgG

Applications:

ELISA, IHC

Recommended dilutions:

ELISA:1:2000-1:10000, IHC:1:20-1:200

Protein Background:

Probable substrate-specific adapter of a BCR (BTB-CUL3-RBX1) E3 ubiquitin-protein ligase complex mediating the ubiquitination and subsequent proteasomal degradation of target proteins. Promotes the ubiquitination of HDAC1; the function seems to depend on KCTD11: KCTD6 oligomerization. Can function as antagonist of the Hedgehog pathway by affecting the nuclear transfer of transcription factor GLI1; the function probably occurs via HDAC1 down-regulation, keeping GLI1 acetylated and inactive. Inhibits cell growth and tumorigenicity of medulloblastoma (MDB). Involved in regulating protein levels of ANK1 isoform Mu17 probably implicating CUL3-dependent proteasomal degradation.

Gene ID:

KCTD6

Uniprot

Q8NC69

Synonyms:

BTB/POZ domain-containing protein KCTD6 (KCASH3 protein) (Potassium channel tetramerization domain-containing protein 6), KCTD6

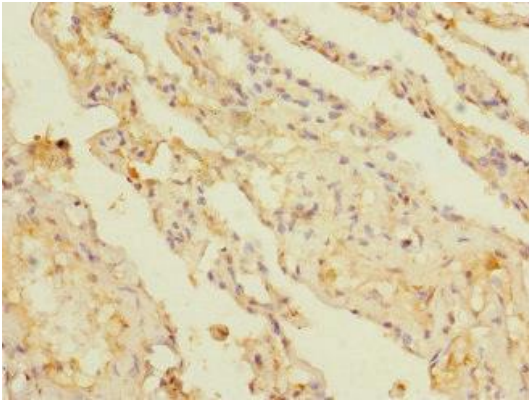
Immunogen:

Recombinant Human BTB/POZ domain-containing protein KCTD6 protein (1-237AA).

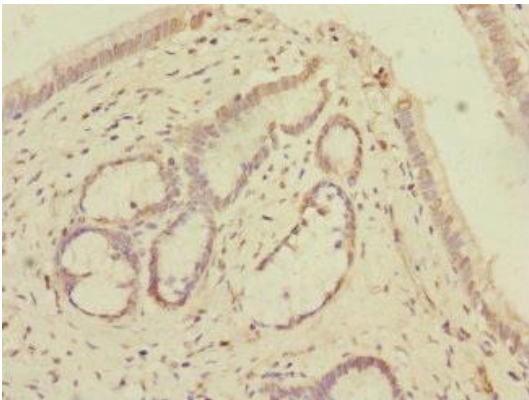
Storage:

Preservative: 0.03% Proclin 300. Constituents: 50% Glycerol, 0.01M PBS, PH 7.4

Product Images



Immunohistochemistry of paraffin-embedded human lung tissue using PACO38314 at dilution of 1:100.



Immunohistochemistry of paraffin-embedded human pancreatic tissue using PACO38314 at dilution of 1:100.