

## Product Information

**Size:**

50ug

**Reactivity:**

Human

**Source:**

Rabbit

**Isotype:**

IgG

**Applications:**

ELISA, IHC

**Recommended dilutions:**

ELISA:1:2000-1:10000, IHC:1:20-1:200

**Protein Background:**

Meiosis-specific telomere-associated protein involved in meiotic telomere clustering, also named bouquet formation, the telomere-mediated chromosomal movement along the nuclear envelope which is crucial for homologous pairing and synapsis. Probably acts as a hub for the assembly of a conserved meiotic telomere complex required for chromosome movements via interaction with TERF1. Promotes telomere association with the nuclear envelope and deposition of the SUN-KASH/LINC complex. Also recruits cohesin to telomeres to develop structural rigidity.

**Gene ID:**

TERB1

**Uniprot**

Q8NA31

**Synonyms:**

Telomere repeats-binding bouquet formation protein 1 (Coiled-coil domain-containing protein 79), TERB1, CCDC79

**Immunogen:**

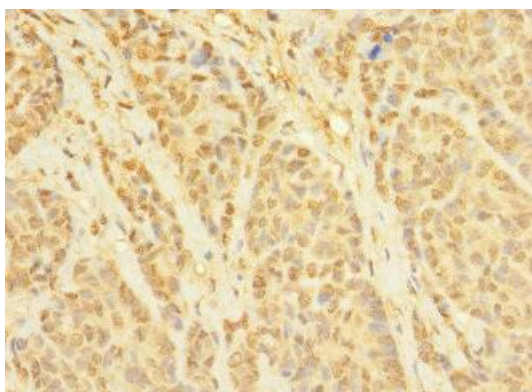
Recombinant Human Telomere repeats-binding bouquet formation protein 1 protein (301-550AA).

**Storage:**

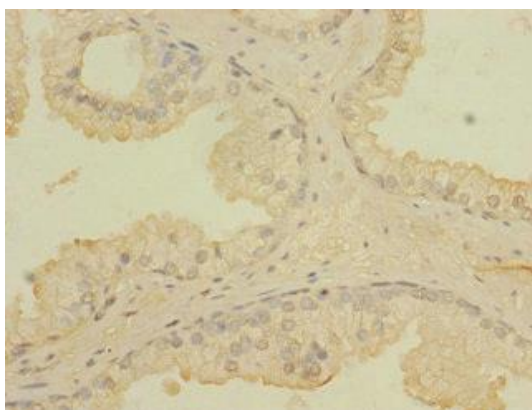
Preservative: 0.03% Proclin 300. Constituents: 50% Glycerol, 0.01M PBS, PH 7.4

## Product Images

---



Immunohistochemistry of paraffin-embedded human ovarian cancer using PACO38298 at dilution of 1:100.



Immunohistochemistry of paraffin-embedded human prostate cancer using PACO38298 at dilution of 1:100.