

# FAM160A2 Antibody



PACO38266

---

## Product Information

**Size:**

50ug

**Reactivity:**

Human

**Source:**

Rabbit

**Isotype:**

IgG

**Applications:**

ELISA, IHC

**Recommended dilutions:**

ELISA:1:2000-1:10000, IHC:1:20-1:200

**Protein Background:**

Component of the FTS/Hook/FHIP complex (FHF complex). The FHF complex may function to promote vesicle trafficking and/or fusion via the homotypic vesicular protein sorting complex (the HOPS complex).

**Gene ID:**

FAM160A2

**Uniprot**

Q8N612

**Synonyms:**

FTS and Hook-interacting protein (FHIP) (Protein FAM160A2), FAM160A2, C11orf56 KIAA1759

**Immunogen:**

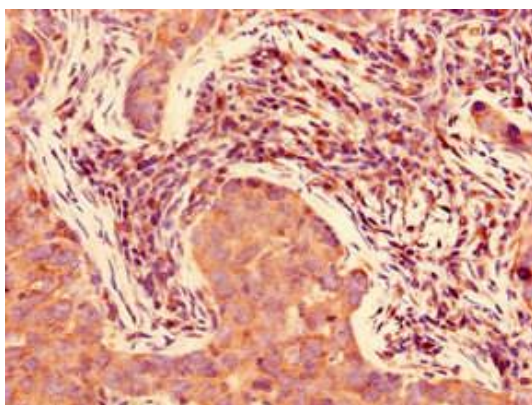
Recombinant Human FTS and Hook-interacting protein (1-300AA).

**Storage:**

Preservative: 0.03% Proclin 300. Constituents: 50% Glycerol, 0.01M PBS, PH 7.4

## Product Images

---



Immunohistochemistry of paraffin-embedded human pancreatic cancer using PACO38266 at dilution of 1:100.