

PACO38242

Product Information

Size:

50ug

Reactivity:

Human, Mouse

Source:

Rabbit

Isotype:

IgG

Applications:

ELISA, WB, IHC

Recommended dilutions:

ELISA:1:2000-1:10000, WB:1:500-1:5000,
IHC:1:20-1:200

Protein Background:

Regulates the mitochondrial permeability transition pore and is essential for cellular survival and development.

Gene ID:

PPM1K

Uniprot

Q8N3J5

Synonyms:

Protein phosphatase 1K, mitochondrial (EC 3.1.3.16) (PP2C domain-containing protein phosphatase 1K) (PP2C-like mitochondrial protein) (PP2C-type mitochondrial phosphoprotein phosphatase) (PTMP) (Protein phosphatase 2C isoform kappa) (PP2C-kappa), PPM1K, PP2CM

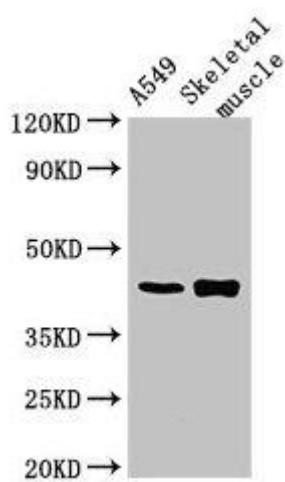
Immunogen:

Recombinant Human Protein phosphatase 1K, mitochondrial protein (30-372AA).

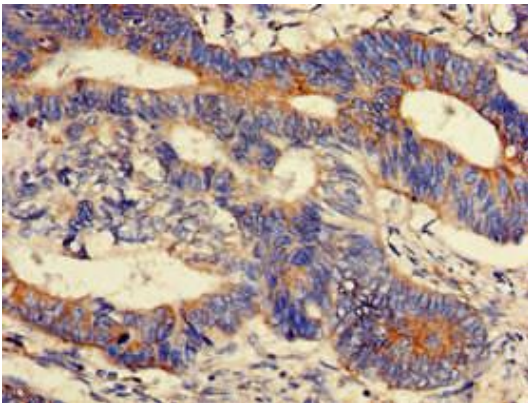
Storage:

Preservative: 0.03% Proclin 300. Constituents: 50% Glycerol, 0.01M PBS, PH 7.4

Product Images



Western Blot. Positive WB detected in: A549 whole cell lysate, Mouse skeletal muscle tissue. All lanes: PPM1K antibody at 2.7 μ g/ml. Secondary. Goat polyclonal to rabbit IgG at 1/50000 dilution. Predicted band size: 41, 26, 17 kDa. Observed band size: 41 kDa.



Immunohistochemistry of paraffin-embedded human colon cancer using PACO38242 at dilution of 1:100.