

OR2L13 Antibody



PACO38238

Product Information

Size:

50ug

Reactivity:

Human, Mouse

Source:

Rabbit

Isotype:

IgG

Applications:

ELISA, WB, IF

Recommended dilutions:

ELISA:1:2000-1:10000, WB:1:1000-1:5000,
IF:1:50-1:200

Protein Background:

Odorant receptor.

Gene ID:

OR2L13

Uniprot

Q8N349

Synonyms:

Olfactory receptor 2L13 (Olfactory receptor 2L14), OR2L13, OR2L14

Immunogen:

Recombinant Human Olfactory receptor 2L13 protein (158-194AA).

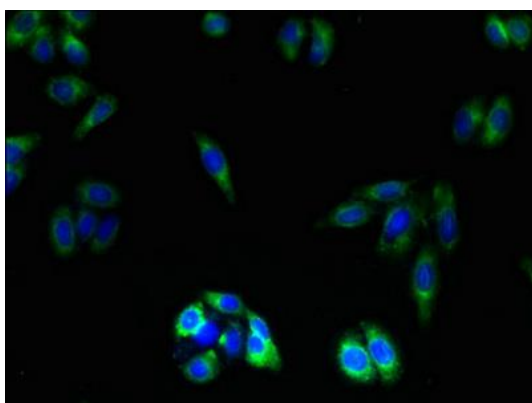
Storage:

Preservative: 0.03% Proclin 300. Constituents: 50% Glycerol, 0.01M PBS, PH 7.4

Product Images



Western blot. All lanes: OR2L13 antibody at 6 μ g/ml + Mouse liver tissue. Secondary. Goat polyclonal to rabbit IgG at 1/10000 dilution. Predicted band size: 36 kDa. Observed band size: 36 kDa.



Immunofluorescent analysis of HepG2 cells using PACO38238 at dilution of 1:100 and Alexa Fluor 488-conjugated AffiniPure Goat Anti-Rabbit IgG(H+L).