

# CPXCR1 Antibody



PACO38218

---

## Product Information

**Size:**

50ug

**Reactivity:**

Human, Mouse

**Source:**

Rabbit

**Isotype:**

IgG

**Applications:**

ELISA, WB, IHC

**Recommended dilutions:**

ELISA:1:2000-1:10000, WB:1:1000-1:5000,  
IHC:1:20-1:200

**Protein Background:**

**Gene ID:**

CPXCR1

**Uniprot**

Q8N123

**Synonyms:**

CPX chromosomal region candidate gene 1 protein (Cancer/testis antigen 77) (CT77),  
CPXCR1

**Immunogen:**

Recombinant Human CPX chromosomal region candidate gene 1 protein (1-301AA).

**Storage:**

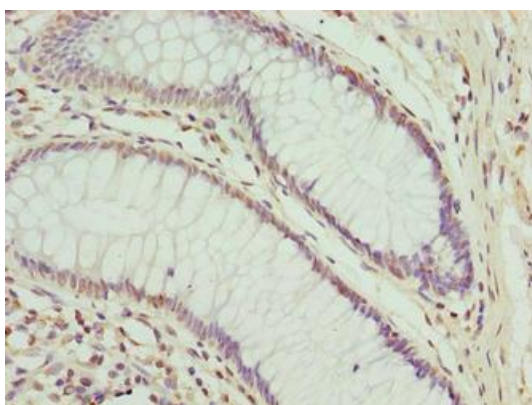
Preservative: 0.03% Proclin 300. Constituents: 50% Glycerol, 0.01M PBS, PH 7.4

## Product Images

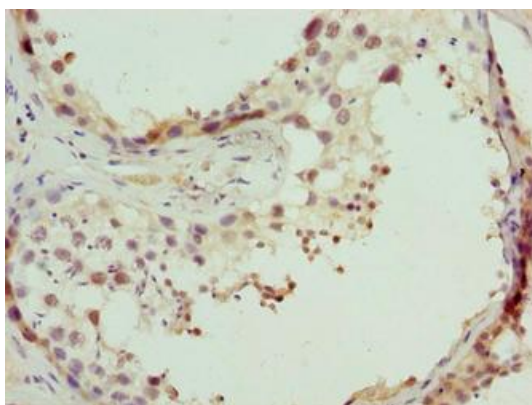
---



Western blot. All lanes: CPXCR1 antibody at 5 $\mu$ g/ml + Mouse brain tissue. Secondary. Goat polyclonal to rabbit IgG at 1/10000 dilution. Predicted band size: 35 kDa. Observed band size: 35 kDa.



Immunohistochemistry of paraffin-embedded human colon cancer using PACO38218 at dilution of 1:100.



Immunohistochemistry of paraffin-embedded human testis tissue using PACO38218 at dilution of 1:100.