

LSMEM2 Antibody



PACO38214

Product Information

Size:

50ug

Reactivity:

Human

Source:

Rabbit

Isotype:

IgG

Applications:

ELISA, IHC, IF

Recommended dilutions:

ELISA:1:2000-1:10000, IHC:1:20-1:200,
IF:1:50-1:200

Protein Background:

Gene ID:

LSMEM2

Uniprot

Q8N112

Synonyms:

Leucine-rich single-pass membrane protein 2, LSMEM2, C3orf45

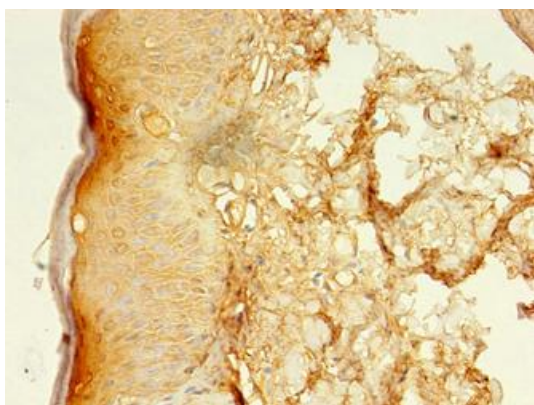
Immunogen:

Recombinant Human Leucine-rich single-pass membrane protein 2 protein (1-96AA).

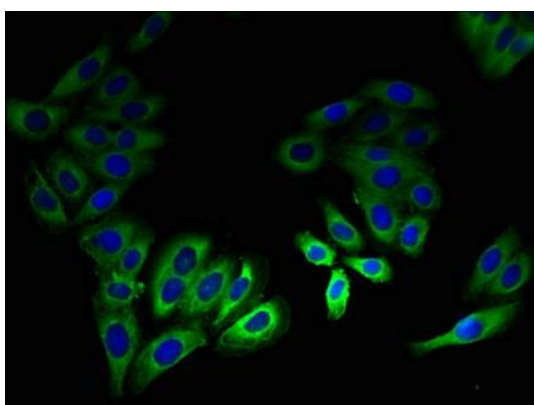
Storage:

Preservative: 0.03% Proclin 300. Constituents: 50% Glycerol, 0.01M PBS, PH 7.4

Product Images



Immunohistochemistry of paraffin-embedded human skin tissue using PACO38214 at dilution of 1:100.



Immunofluorescent analysis of HepG2 cells using PACO38214 at dilution of 1:100 and Alexa Fluor 488-conjugated AffiniPure Goat Anti-Rabbit IgG(H+L).