

# PSKH2 Antibody



PACO38198

---

## Product Information

**Size:**

50ug

**Reactivity:**

Human, Mouse, Rat

**Source:**

Rabbit

**Isotype:**

IgG

**Applications:**

ELISA, WB, IHC

**Recommended dilutions:**

ELISA:1:2000-1:10000, WB:1:500-1:1000,  
IHC:1:20-1:200

**Protein Background:****Gene ID:**

PSKH2

**Uniprot**

Q96QS6

**Synonyms:**

Serine/threonine-protein kinase H2 (EC 2.7.11.1) (Protein serine kinase H2) (PSK-H2),  
PSKH2

**Immunogen:**

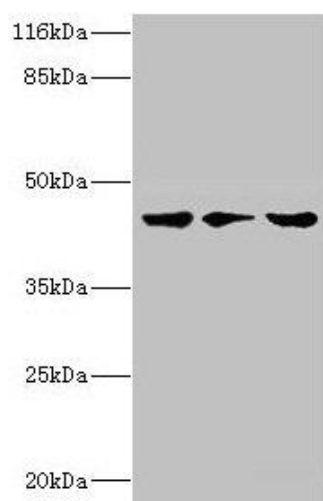
Recombinant Human Serine/threonine-protein kinase H2 protein (63-320AA).

**Storage:**

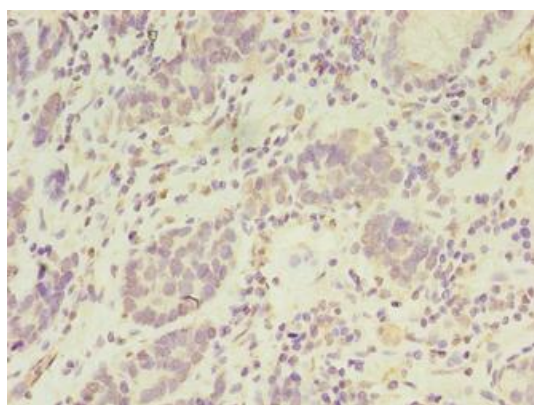
Preservative: 0.03% Proclin 300. Constituents: 50% Glycerol, 0.01M PBS, PH 7.4

## Product Images

---



Western blot. All lanes: PSKH2 antibody at 2 $\mu$ g/ml. Lane 1: Hela whole cell lysate. Lane 2: Mouse heart tissue. Lane 3: Rat gonad tissue. Secondary. Goat polyclonal to rabbit IgG at 1/10000 dilution. Predicted band size: 44 kDa. Observed band size: 44 kDa.



Immunohistochemistry of paraffin-embedded human gastric cancer using PACO38198 at dilution of 1:100.