

# OPALIN Antibody



PACO38194

---

## Product Information

**Size:**

50ug

**Reactivity:**

Human

**Source:**

Rabbit

**Isotype:**

IgG

**Applications:**

ELISA, IF

**Recommended dilutions:**

ELISA:1:2000-1:10000, IF:1:50-1:200

**Protein Background:**

**Gene ID:**

OPALIN

**Uniprot**

Q96PE5

**Synonyms:**

Opalin (Oligodendrocytic myelin paranodal and inner loop protein) (Transmembrane protein 10), OPALIN, HTMP10 TMEM10

**Immunogen:**

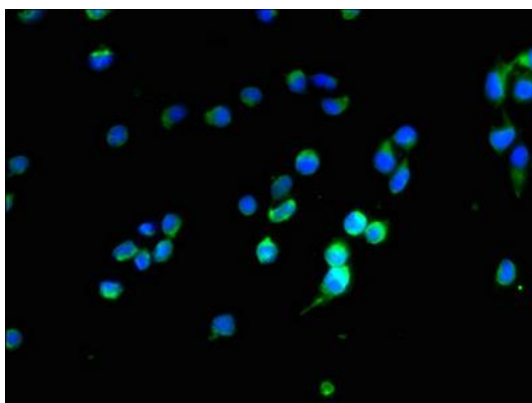
Recombinant Human Opalin protein (51-141AA).

**Storage:**

Preservative: 0.03% Proclin 300. Constituents: 50% Glycerol, 0.01M PBS, PH 7.4

## Product Images

---



Immunofluorescent analysis of 293T cells using PACO38194 at dilution of 1:100 and Alexa Fluor 488-conjugated AffiniPure Goat Anti-Rabbit IgG(H+L).