

MS4A4A Antibody



PACO38170

Product Information

Size:

50ug

Reactivity:

Human

Source:

Rabbit

Isotype:

IgG

Applications:

ELISA, IHC, IF

Recommended dilutions:

ELISA:1:2000-1:10000, IHC:1:20-1:200,
IF:1:50-1:200

Protein Background:

May be involved in signal transduction as a component of a multimeric receptor complex.

Gene ID:

MS4A4A

Uniprot

Q96JQ5

Synonyms:

Membrane-spanning 4-domains subfamily A member 4A (CD20 antigen-like 1) (Four-span transmembrane protein 1), MS4A4A, 4SPAN1 CD20L1 MS4A4

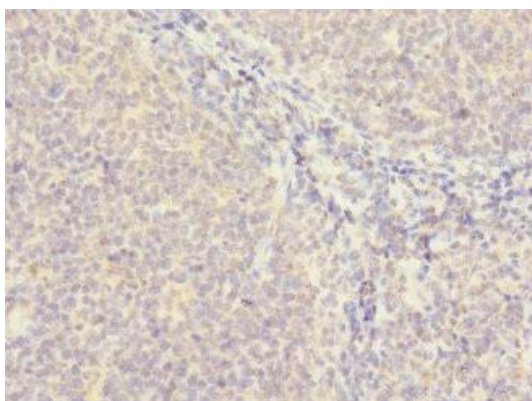
Immunogen:

Recombinant Human Membrane-spanning 4-domains subfamily A member 4A protein (1-64AA).

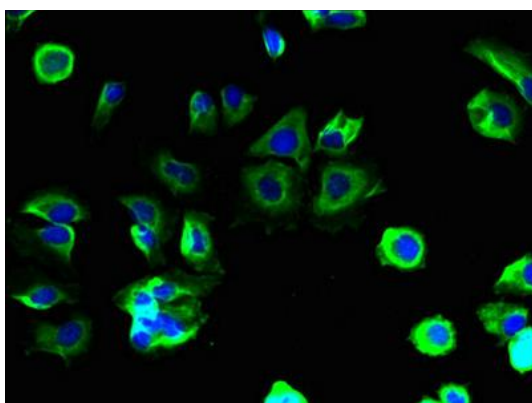
Storage:

Preservative: 0.03% Proclin 300. Constituents: 50% Glycerol, 0.01M PBS, PH 7.4

Product Images



Immunohistochemistry of paraffin-embedded human tonsil tissue using PACO38170 at dilution of 1:100.



Immunofluorescent analysis of MCF-7 cells using PACO38170 at dilution of 1:100 and Alexa Fluor 488-conjugated AffiniPure Goat Anti-Rabbit IgG(H+L).