

ZDHHC12 Antibody



PACO38154

Product Information

Size:

50ug

Reactivity:

Human

Source:

Rabbit

Isotype:

IgG

Applications:

ELISA, WB, IHC, IF

Recommended dilutions:

ELISA:1:2000-1:10000, WB:1:500-1:2000,
IHC:1:20-1:200, IF:1:50-1:200

Protein Background:

endoplasmic reticulum, Golgi apparatus, palmitoyltransferase activity, protein-cysteine S-palmitoyltransferase activity, peptidyl-L-cysteine S-palmitoylation, protein palmitoylation, protein targeting to membrane.

Gene ID:

ZDHHC12

Uniprot

Q96GR4

Synonyms:

Probable palmitoyltransferase ZDHHC12 (EC 2.3.1.225) (Zinc finger DHHC domain-containing protein 12) (DHHC-12) (Zinc finger protein 400), ZDHHC12, ZNF400

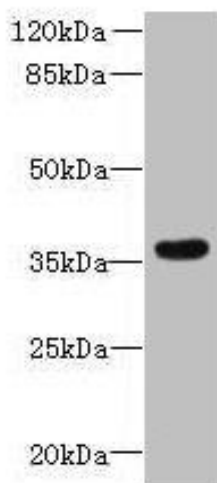
Immunogen:

Recombinant Human Probable palmitoyltransferase ZDHHC12 protein (121-197AA).

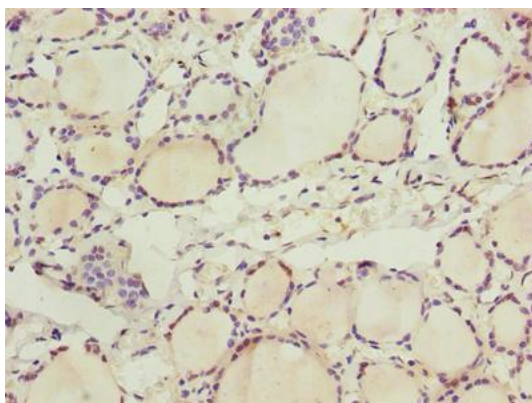
Storage:

Preservative: 0.03% Proclin 300. Constituents: 50% Glycerol, 0.01M PBS, PH 7.4

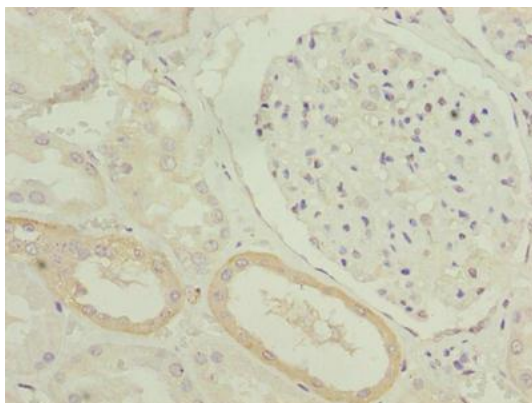
Product Images



Western blot. All lanes: ZDHHC12 antibody at 0.4 μ g/ml + A431 whole cell lysate. Secondary. Goat polyclonal to rabbit IgG at 1/10000 dilution. Predicted band size: 31, 25, 37 kDa. Observed band size: 37 kDa.



Immunohistochemistry of paraffin-embedded human thyroid tissue using PACO38154 at dilution of 1:100.



Immunohistochemistry of paraffin-embedded human kidney tissue using PACO38154 at dilution of 1:100.