

LRRC39 Antibody



PACO38134

Product Information

Size:

50ug

Reactivity:

Human

Source:

Rabbit

Isotype:

IgG

Applications:

ELISA, IHC

Recommended dilutions:

ELISA:1:2000-1:10000, IHC:1:20-1:200

Protein Background:

Gene ID:

LRRC39

Uniprot

Q96DD0

Synonyms:

Leucine-rich repeat-containing protein 39 (Myosin-interacting M-band-associated stress-responsive protein) (Myomasp), LRRC39

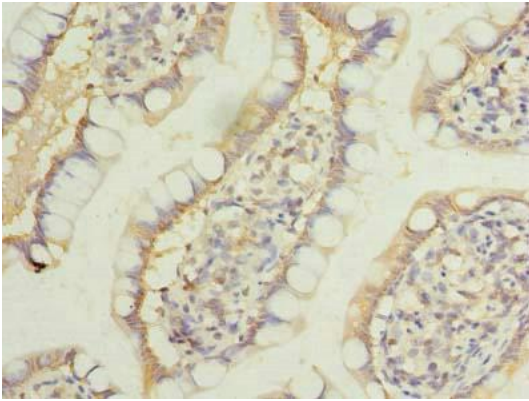
Immunogen:

Recombinant Human Leucine-rich repeat-containing protein 39 protein (1-335AA).

Storage:

Preservative: 0.03% Proclin 300. Constituents: 50% Glycerol, 0.01M PBS, PH 7.4

Product Images



Immunohistochemistry of paraffin-embedded human small intestine tissue using PACO38134 at dilution of 1:100.