

Product Information

Size:

50ug

Reactivity:

Human

Source:

Rabbit

Isotype:

IgG

Applications:

ELISA, WB, IHC

Recommended dilutions:

ELISA:1:2000-1:10000, WB:1:200-1:3000,
IHC:1:20-1:200

Protein Background:

Lysophosphatidylglycerol (LPG) specific acyltransferase that recognizes various acyl-CoAs and LPGs as substrates but demonstrates a clear preference for long chain saturated fatty acyl-CoAs and oleoyl-CoA as acyl donors. Prefers oleoyl-LPG over palmitoyl-LPG as an acyl receptor and oleoyl-CoA over lauroyl-CoA as an acyl donor.

Gene ID:

LPGAT1

Uniprot

Q92604

Synonyms:

Acyl-CoA: lysophosphatidylglycerol acyltransferase 1 (EC 2.3.1. -), LPGAT1, FAM34A
KIAA0205

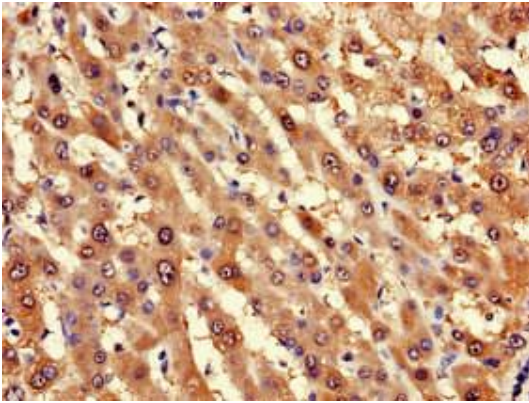
Immunogen:

Recombinant Human Acyl-CoA: lysophosphatidylglycerol acyltransferase 1 protein (151-341AA).

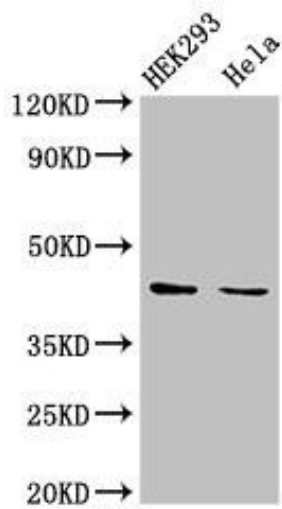
Storage:

Preservative: 0.03% Proclin 300. Constituents: 50% Glycerol, 0.01M PBS, PH 7.4

Product Images



Immunohistochemistry of paraffin-embedded human liver cancer using PACO38090 at dilution of 1:100.



Western Blot. Positive WB detected in: HEK293 whole cell lysate, HeLa whole cell lysate. All lanes: LPGAT1 antibody at 3µg/ml. Secondary. Goat polyclonal to rabbit IgG at 1/50000 dilution. Predicted band size: 44 kDa. Observed band size: 44 kDa.