

Product Information

Size:

50ug

Reactivity:

Human

Source:

Rabbit

Isotype:

IgG

Applications:

ELISA, IHC, IF

Recommended dilutions:

ELISA:1:2000-1:10000, IHC:1:20-1:200,
IF:1:50-1:200

Protein Background:

extracellular exosome, collagen binding, fibronectin binding, laminin binding, negative regulation of establishment of protein localization to plasma membrane, positive regulation of cell migration, receptor-mediated virion attachment to host cell.

Gene ID:

LRRC15

Uniprot

Q8TF66

Synonyms:

Leucine-rich repeat-containing protein 15 (Leucine-rich repeat protein induced by beta-amyloid homolog) (hLib), LRRC15, LIB

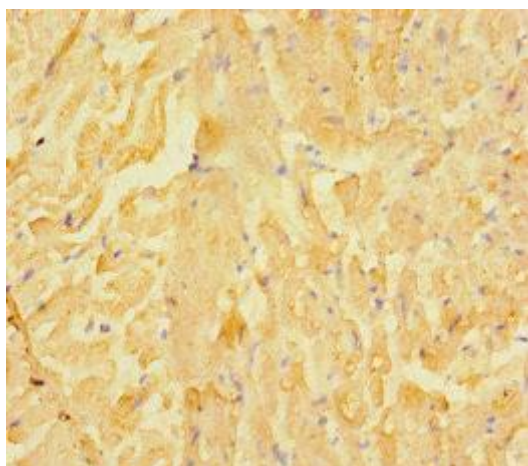
Immunogen:

Recombinant Human Leucine-rich repeat-containing protein 15 protein (301-538AA).

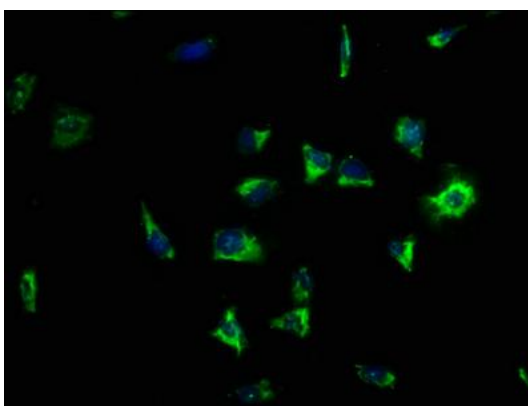
Storage:

Preservative: 0.03% Proclin 300. Constituents: 50% Glycerol, 0.01M PBS, PH 7.4

Product Images



Immunohistochemistry of paraffin-embedded human heart tissue using PACO38042 at dilution of 1:100.



Immunofluorescence staining of SH-SY5Y cells with PACO38042 at 1:133, counter-stained with DAPI. The cells were fixed in 4% formaldehyde, permeabilized using 0.2% Triton X-100 and blocked in 10% normal Goat Serum. The cells were then incubated with the antibody overnight at 4°C. The secondary antibody was Alexa Fluor 488-conjugated AffiniPure Goat Anti-Rabbit IgG(H+L).