

MAGEC3 Antibody



PACO38030

Product Information

Size:

50ug

Reactivity:

Human, Rat

Source:

Rabbit

Isotype:

IgG

Applications:

ELISA, WB

Recommended dilutions:

ELISA:1:2000-1:10000, WB:1:500-1:2000

Protein Background:

Gene ID:

MAGEC3

Uniprot

Q8TD91

Synonyms:

Melanoma-associated antigen C3 (Cancer/testis antigen 7.2) (CT7.2) (Hepatocellular carcinoma-associated antigen 2) (MAGE-C3 antigen), MAGEC3, HCA2

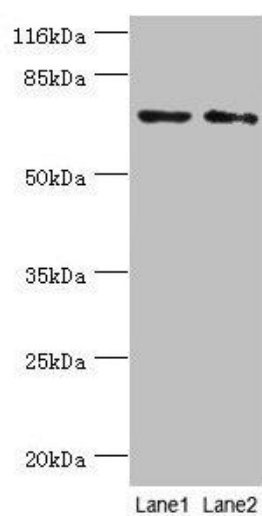
Immunogen:

Recombinant Human Melanoma-associated antigen C3 protein (75-197AA).

Storage:

Preservative: 0.03% Proclin 300. Constituents: 50% Glycerol, 0.01M PBS, PH 7.4

Product Images



Western blot. All lanes: MAGEC3 antibody at 2 μ g/ml. Lane 1: A375 whole cell lysate. Lane 2: Rat thymus tissue. Secondary. Goat polyclonal to rabbit IgG at 1/10000 dilution. Predicted band size: 72, 39 kDa. Observed band size: 72 kDa.