

NUBPL Antibody



PACO38010

Product Information

Size:

50ug

Reactivity:

Human

Source:

Rabbit

Isotype:

IgG

Applications:

ELISA, WB, IHC

Recommended dilutions:

ELISA:1:2000-1:10000, WB:1:500-1:2000,
IHC:1:20-1:200

Protein Background:

Required for the assembly of the mitochondrial membrane respiratory chain NADH dehydrogenase (Complex I). May deliver of one or more Fe-S clusters to complex I subunits.

Gene ID:

NUBPL

Uniprot

Q8TB37

Synonyms:

Iron-sulfur protein NUBPL (IND1 homolog) (Nucleotide-binding protein-like) (huInd1),
NUBPL, C14orf127

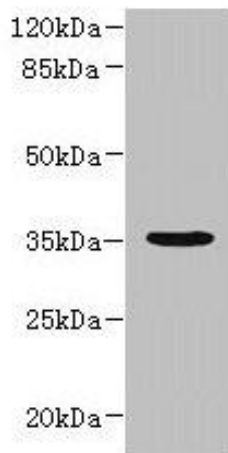
Immunogen:

Recombinant Human Iron-sulfur protein NUBPL protein (39-319AA).

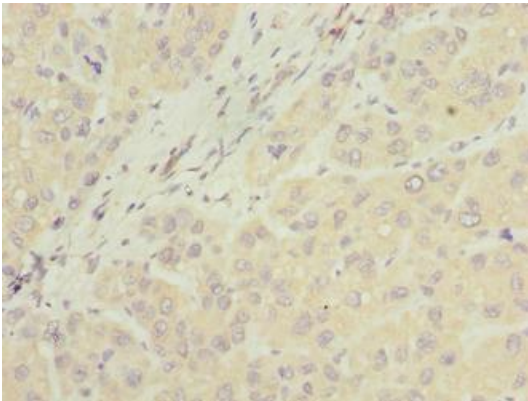
Storage:

Preservative: 0.03% Proclin 300. Constituents: 50% Glycerol, 0.01M PBS, PH 7.4

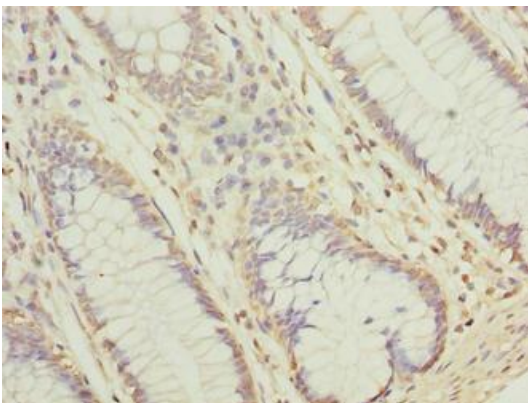
Product Images



Western blot. All lanes: NUBPL antibody at 1 μ g/ml + A431 whole cell lysate. Secondary. Goat polyclonal to rabbit IgG at 1/10000 dilution. Predicted band size: 35, 19 kDa. Observed band size: 35 kDa.



Immunohistochemistry of paraffin-embedded human liver cancer using PACO38010 at dilution of 1:100.



Immunohistochemistry of paraffin-embedded human colon cancer using PACO38010 at dilution of 1:100.