

# SPANXD Antibody



PACO37998

---

## Product Information

**Size:**

50ug

**Reactivity:**

Human

**Source:**

Rabbit

**Isotype:**

IgG

**Applications:**

ELISA, IHC

**Recommended dilutions:**

ELISA:1:2000-1:10000, IHC:1:20-1:200

**Protein Background:**

**Gene ID:**

SPANXD

**Uniprot**

Q9BXN6

**Synonyms:**

Sperm protein associated with the nucleus on the X chromosome D (Cancer/testis antigen 11.4) (CT11.4) (Nuclear-associated protein SPAN-Xd) (SPANX-D) (SPANX family member D), SPANXD, SPANXE

**Immunogen:**

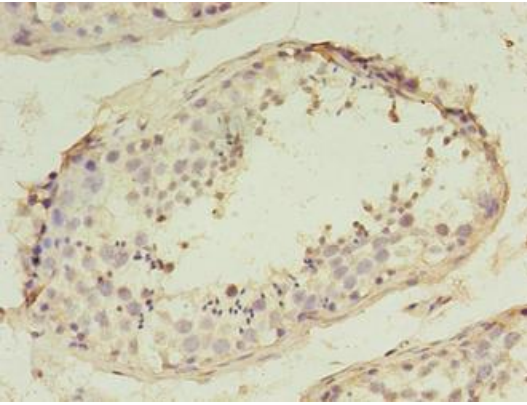
Recombinant Human Sperm protein associated with the nucleus on the X chromosome D protein (1-97AA).

**Storage:**

Preservative: 0.03% Proclin 300. Constituents: 50% Glycerol, 0.01M PBS, PH 7.4

## Product Images

---



Immunohistochemistry of paraffin-embedded human testis tissue using PACO37998 at dilution of 1:100.