

GIMAP7 Antibody



PACO37994

Product Information

Size:

50ug

Reactivity:

Human

Source:

Rabbit

Isotype:

IgG

Applications:

ELISA, WB

Recommended dilutions:

ELISA:1:2000-1:10000, WB:1:500-1:2000

Protein Background:

The dimer has GTPase activity; the active site contains residues from both subunits.

Gene ID:

GIMAP7

Uniprot

Q8NHV1

Synonyms:

GTPase IMAP family member 7 (Immunity-associated nucleotide 7 protein) (IAN-7), GIMAP7, IAN7

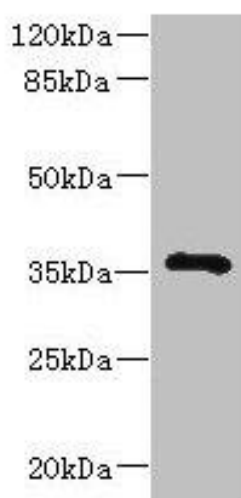
Immunogen:

Recombinant Human GTPase IMAP family member 7 protein (1-273AA).

Storage:

Preservative: 0.03% Proclin 300. Constituents: 50% Glycerol, 0.01M PBS, PH 7.4

Product Images



Western blot. All lanes: GIMAP7 antibody at 2 μ g/ml + Jurkat whole cell lysate. Secondary. Goat polyclonal to rabbit IgG at 1/10000 dilution. Predicted band size: 35 kDa. Observed band size: 35 kDa.