

WFDC11 Antibody



PACO37986

Product Information

Size:

50ug

Reactivity:

Human

Source:

Rabbit

Isotype:

IgG

Applications:

ELISA, IHC

Recommended dilutions:

ELISA:1:2000-1:10000, IHC:1:20-1:200

Protein Background:

Gene ID:

WFDC11

Uniprot

Q8NEX6

Synonyms:

Protein WFDC11, WFDC11, WAP11

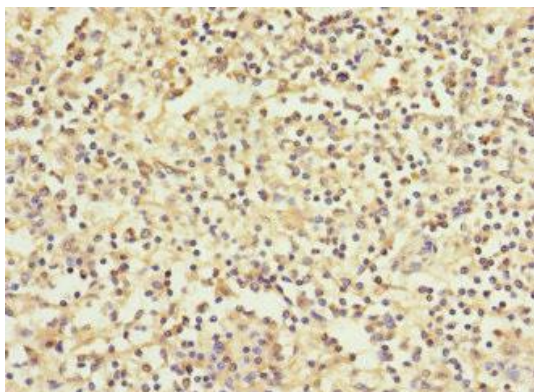
Immunogen:

Recombinant Human Protein WFDC11 protein (26-87AA).

Storage:

Preservative: 0.03% Proclin 300. Constituents: 50% Glycerol, 0.01M PBS, PH 7.4

Product Images



Immunohistochemistry of paraffin-embedded human spleen tissue using PACO37986 at dilution of 1:100.