

Product Information

Size:

50ug

Reactivity:

Human

Source:

Rabbit

Isotype:

IgG

Applications:

ELISA, WB, IHC

Recommended dilutions:

ELISA:1:2000-1:10000, WB:1:1000-1:5000,
IHC:1:20-1:200

Protein Background:

Accessory subunit of neuronal kainate-sensitive glutamate receptors, GRIK2 and GRIK3. Increases kainate-receptor channel activity, slowing the decay kinetics of the receptors, without affecting their expression at the cell surface, and increasing the open probability of the receptor channels. Modulates the agonist sensitivity of kainate receptors. Slows the decay of kainate receptor-mediated excitatory postsynaptic currents (EPSCs), thus directly influencing synaptic transmission.

Gene ID:

NETO2

Uniprot

Q8NC67

Synonyms:

Neuropilin and tolloid-like protein 2 (Brain-specific transmembrane protein containing 2 CUB and 1 LDL-receptor class A domains protein 2), NETO2, BTCL2

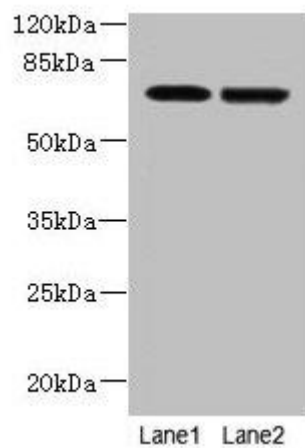
Immunogen:

Recombinant Human Neuropilin and tolloid-like protein 2 protein (378-525AA).

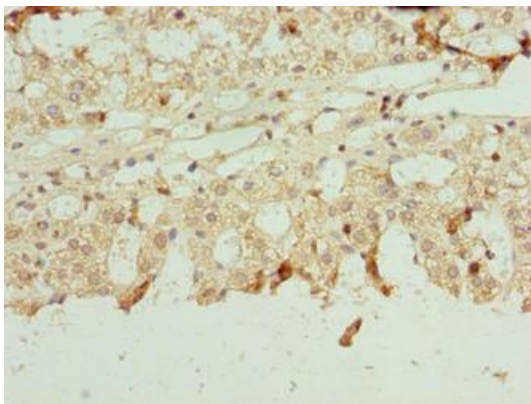
Storage:

Preservative: 0.03% Proclin 300. Constituents: 50% Glycerol, 0.01M PBS, PH 7.4

Product Images



Western blot. All lanes: NETO2 antibody at 4 μ g/ml. Lane 1: U251 whole cell lysate. Lane 2: MDA-MB-231 whole cell lysate. Secondary: Goat polyclonal to rabbit IgG at 1/10000 dilution. Predicted band size: 60, 23, 59 kDa. Observed band size: 70 kDa.



Immunohistochemistry of paraffin-embedded human adrenal gland tissue using PACO37970 at dilution of 1:100.