

Product Information

Size:

50ug

Reactivity:

Human

Source:

Rabbit

Isotype:

IgG

Applications:

ELISA, WB, IHC

Recommended dilutions:

ELISA:1:2000-1:10000, WB:1:500-1:5000,
IHC:1:500-1:1000

Protein Background:

Polyglutamylase which preferentially modifies alpha-tubulin. Mediates tubulin polyglutamylation in cilia. Involved in the side-chain elongation step of the polyglutamylation reaction rather than in the initiation step.

Gene ID:

TTLL6

Uniprot

Q8N841

Synonyms:

Tubulin polyglutamylase TTLL6 (EC 6. -. -.) (Tubulin--tyrosine ligase-like protein 6),
TTLL6, TTL6

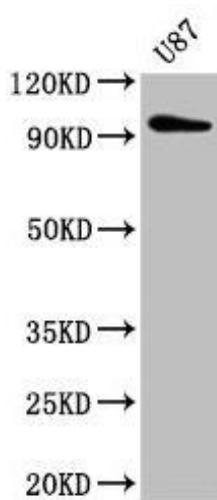
Immunogen:

Recombinant Human Tubulin polyglutamylase TTLL6 protein (121-310AA).

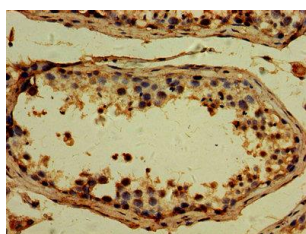
Storage:

Preservative: 0.03% Proclin 300. Constituents: 50% Glycerol, 0.01M PBS, PH 7.4

Product Images



Western Blot. Positive WB detected in: U87 whole cell lysate. All lanes: TTL6 antibody at 5 μ g/ml. Secondary. Goat polyclonal to rabbit IgG at 1/50000 dilution. Predicted band size: 97, 65 kDa. Observed band size: 97 kDa.



IHC image of PACO37950 diluted at 1:500 and staining in paraffin-embedded human testis tissue performed on a Leica BondTM system. After dewaxing and hydration, antigen retrieval was mediated by high pressure in a citrate buffer (pH 6.0). Section was blocked with 10% normal goat serum 30min at RT. Then primary antibody (1% BSA) was incubated at 4 $^{\circ}$ C overnight. The primary is detected by a biotinylated secondary antibody and visualized using an HRP conjugated SP system.