

KLHDC8A Antibody



PACO37846

Product Information

Size:

50ug

Reactivity:

Human, Mouse

Source:

Rabbit

Isotype:

IgG

Applications:

ELISA, WB, IHC

Recommended dilutions:

ELISA:1:2000-1:10000, WB:1:500-1:2000,
IHC:1:20-1:200

Protein Background:

Cul3-RING ubiquitin ligase complex, protein ubiquitination involved in ubiquitin-dependent protein catabolic process.

Gene ID:

KLHDC8A

Uniprot

Q8IYD2

Synonyms:

Kelch domain-containing protein 8A (Substitute for delta-EGFR expression 1) (S-delta-E1), KLHDC8A

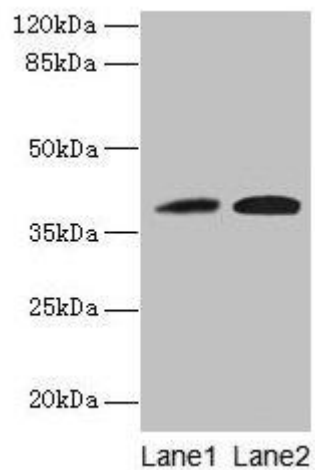
Immunogen:

Recombinant Human Kelch domain-containing protein 8A protein (1-350AA).

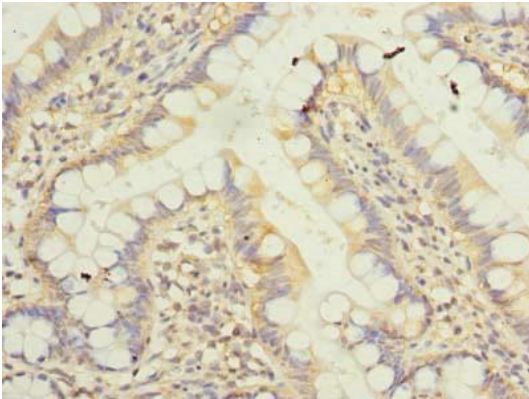
Storage:

Preservative: 0.03% Proclin 300. Constituents: 50% Glycerol, 0.01M PBS, PH 7.4

Product Images



Western blot. All lanes: KLHDC8A antibody at 0.5 μ g/ml. Lane 1: Jurkat whole cell lysate. Lane 2: Mouse liver tissue. Secondary. Goat polyclonal to rabbit IgG at 1/10000 dilution. Predicted band size: 39 kDa. Observed band size: 39 kDa.



Immunohistochemistry of paraffin-embedded human small intestine tissue using PACO37846 at dilution of 1:100.