

Product Information

Size:

50ug

Reactivity:

Human

Source:

Rabbit

Isotype:

IgG

Applications:

ELISA, WB, IHC, IF

Recommended dilutions:

ELISA:1:2000-1:10000, WB:1:500-1:2000,
IHC:1:20-1:200, IF:1:50-1:200

Protein Background:

Component of the tRNA-splicing ligase complex required to facilitate the enzymatic turnover of catalytic subunit RTCB. Together with DDX1, acts by facilitating the guanylation of RTCB, a key intermediate step in tRNA ligation.

Gene ID:

ZBTB8OS

Uniprot

Q8IWT0

Synonyms:

Protein archease (Protein ZBTB8OS) (Zinc finger and BTB domain-containing opposite strand protein 8), ZBTB8OS, ARCH

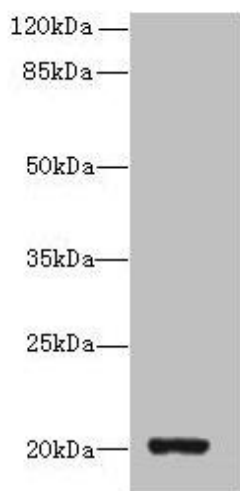
Immunogen:

Recombinant Human Protein archease protein (2-136AA).

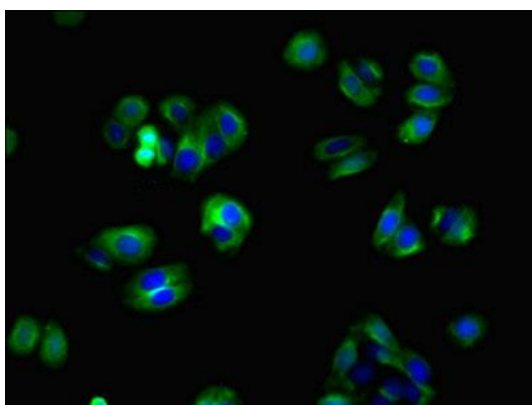
Storage:

Preservative: 0.03% Proclin 300. Constituents: 50% Glycerol, 0.01M PBS, PH 7.4

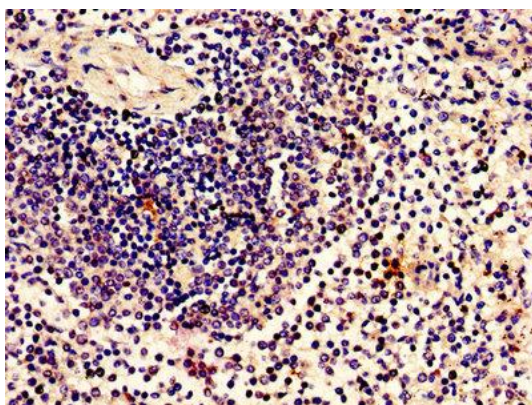
Product Images



Western blot. All lanes: ZBTB8OS antibody at 8 μ g/ml + HL60 whole cell lysate. Secondary. Goat polyclonal to rabbit IgG at 1/10000 dilution. Predicted band size: 20, 16 kDa. Observed band size: 20 kDa.



Immunofluorescent analysis of HepG2 cells using PACO37838 at dilution of 1:100 and Alexa Fluor 488-conjugated AffiniPure Goat Anti-Rabbit IgG(H+L).



Immunohistochemistry of paraffin-embedded human spleen tissue using PACO37838 at dilution of 1:100.