

# PASD1 Antibody



PACO37834

---

## Product Information

**Size:**

50ug

**Reactivity:**

Human

**Source:**

Rabbit

**Isotype:**

IgG

**Applications:**

ELISA, WB

**Recommended dilutions:**

ELISA:1:2000-1:10000, WB:1:500-1:2000

**Protein Background:**

Functions as a suppressor of the biological clock that drives the daily circadian rhythms of cells throughout the body. Acts as a nuclear repressor of the CLOCK-ARNTL/BMAL1 heterodimer-mediated transcriptional activation of the core clock components. Inhibits circadian clock function in cancer cells, when overexpressed.

**Gene ID:**

PASD1

**Uniprot**

Q8IV76

**Synonyms:**

Circadian clock protein PASD1 (Cancer/testis antigen 63) (CT63) (OX-TES-1) (PAS domain-containing protein 1), PASD1

**Immunogen:**

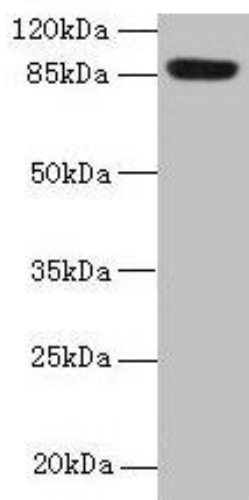
Recombinant Human Circadian clock protein PASD1 protein (301-600AA).

**Storage:**

Preservative: 0.03% Proclin 300. Constituents: 50% Glycerol, 0.01M PBS, PH 7.4

## Product Images

---



Western blot. All lanes: PASD1 antibody at 4 $\mu$ g/ml + A549 whole cell lysate. Secondary. Goat polyclonal to rabbit IgG at 1/10000 dilution. Predicted band size: 88, 73 kDa. Observed band size: 88 kDa.