

# CBWD2 Antibody



PACO37778

---

## Product Information

**Size:**

50ug

**Reactivity:**

Human, Mouse

**Source:**

Rabbit

**Isotype:**

IgG

**Applications:**

ELISA, WB, IHC, IF

**Recommended dilutions:**

ELISA:1:2000-1:10000, WB:1:1000-1:5000,  
IHC:1:20-1:200, IF:1:50-1:200

**Protein Background:**

**Gene ID:**

CBWD2

**Uniprot**

Q8IUJ1

**Synonyms:**

COBW domain-containing protein 2 (Cobalamin synthase W domain-containing protein 2), CBWD2

**Immunogen:**

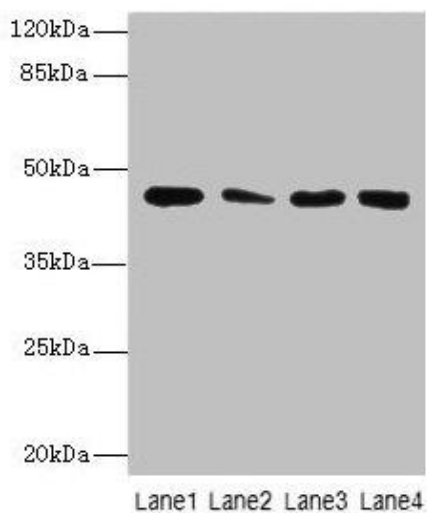
Recombinant Human COBW domain-containing protein 2 protein (96-395AA).

**Storage:**

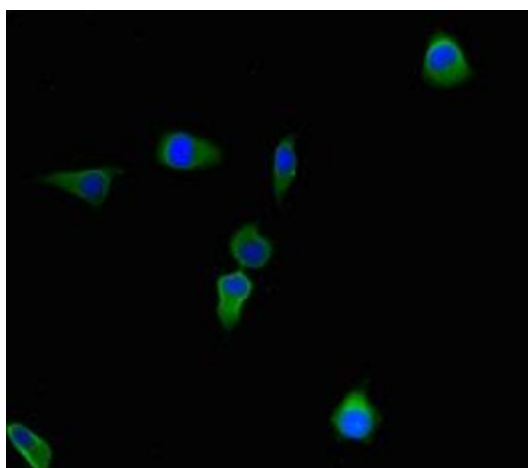
Preservative: 0.03% Proclin 300. Constituents: 50% Glycerol, 0.01M PBS, PH 7.4

## Product Images

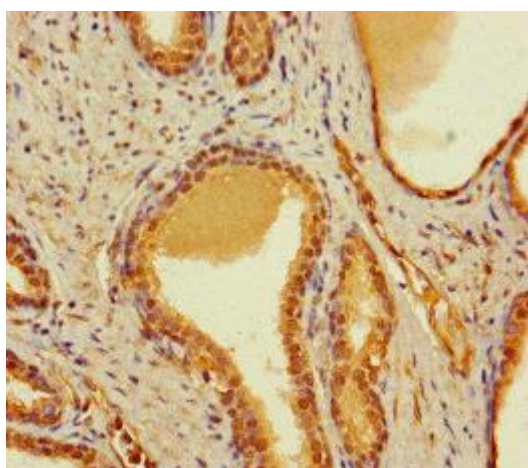
---



Western Blot. All lanes: CBWD2 antibody at 6 $\mu$ g/ml. Lane 1: Mouse heart tissue. Lane 2: Mouse liver tissue. Lane 3: Mouse lung tissue. Lane 4: Hela whole cell lysate. Secondary. Goat polyclonal to rabbit IgG at 1/10000 dilution. Predicted band size: 45 kDa. Observed band size: 45 kDa.



Immunofluorescent analysis of Hela cells using PACO37778 at dilution of 1:100 and Alexa Fluor 488-conjugated AffiniPure Goat Anti-Rabbit IgG(H+L).



Immunohistochemistry of paraffin-embedded human prostate cancer using PACO37778 at dilution of 1:100.