

KRTAP8-1 Antibody



PACO37774

Product Information

Size:

50ug

Reactivity:

Human

Source:

Rabbit

Isotype:

IgG

Applications:

ELISA, IHC

Recommended dilutions:

ELISA:1:2000-1:10000, IHC:1:20-1:200

Protein Background:

In the hair cortex, hair keratin intermediate filaments are embedded in an interfilamentous matrix, consisting of hair keratin-associated proteins (KRTAP), which are essential for the formation of a rigid and resistant hair shaft through their extensive disulfide bond cross-linking with abundant cysteine residues of hair keratins. The matrix proteins include the high-sulfur and high-glycine-tyrosine keratins.

Gene ID:

KRTAP8-1

Uniprot

Q8IUUC2

Synonyms:

Keratin-associated protein 8-1 (High glycine-tyrosine keratin-associated protein 8.1), KRTAP8-1, KAP8.1 KRTAP8.1

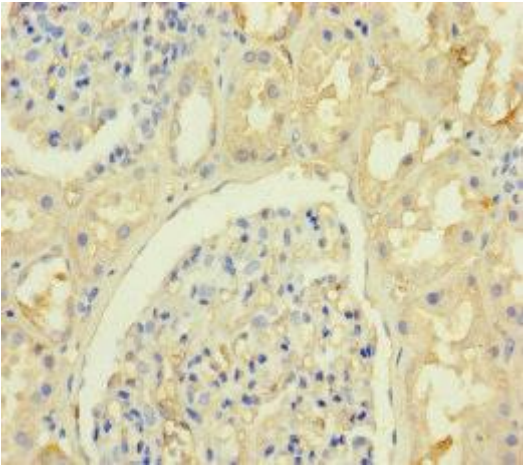
Immunogen:

Recombinant Human Keratin-associated protein 8-1 protein (1-63AA).

Storage:

Preservative: 0.03% Proclin 300. Constituents: 50% Glycerol, 0.01M PBS, PH 7.4

Product Images



Immunohistochemistry of paraffin-embedded human kidney tissue using PACO37774 at dilution of 1:100.