

# CCDC116 Antibody



PACO37758

---

## Product Information

**Size:**

50ug

**Reactivity:**

Human

**Source:**

Rabbit

**Isotype:**

IgG

**Applications:**

ELISA, WB, IHC

**Recommended dilutions:**

ELISA:1:2000-1:10000, WB:1:500-1:2000,  
IHC:1:20-1:200

**Protein Background:**

**Gene ID:**

CCDC116

**Uniprot**

Q8IYX3

**Synonyms:**

Coiled-coil domain-containing protein 116, CCDC116

**Immunogen:**

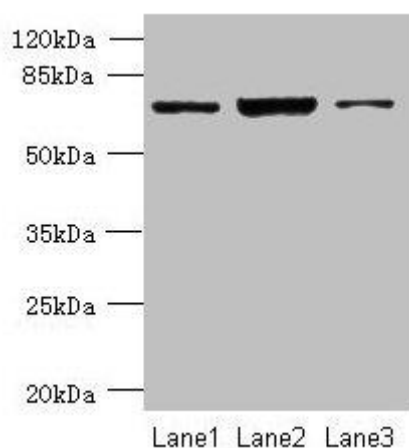
Recombinant Human Coiled-coil domain-containing protein 116 protein (1-300AA).

**Storage:**

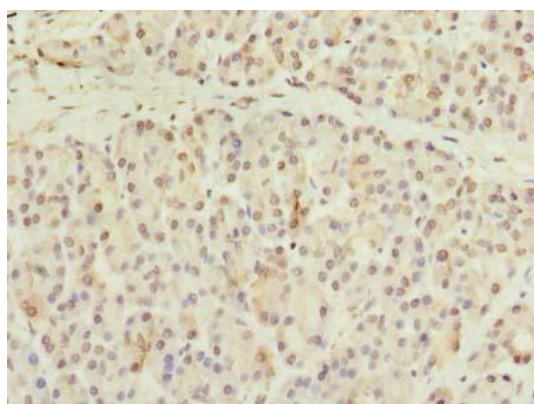
Preservative: 0.03% Proclin 300. Constituents: 50% Glycerol, 0.01M PBS, PH 7.4

## Product Images

---



Western blot. All lanes: CCDC116 antibody at 1.5 $\mu$ g/ml. Lane 1: SH-SY5Y whole cell lysate. Lane 2: Hela whole cell lysate. Lane 3: HCT116 whole cell lysate. Secondary. Goat polyclonal to rabbit IgG at 1/10000 dilution. Predicted band size: 68, 57, 58 kDa. Observed band size: 68 kDa.



Immunohistochemistry of paraffin-embedded human pancreatic tissue using PACO37758 at dilution of 1:100.