

PACO37750

---

## Product Information

**Size:**

50ug

**Reactivity:**

Human

**Source:**

Rabbit

**Isotype:**

IgG

**Applications:**

ELISA, IHC, IF

**Recommended dilutions:**

ELISA:1:2000-1:10000, IHC:1:20-1:200,  
IF:1:50-1:200

**Protein Background:**

S-adenosyl-L-methionine-dependent methyltransferase that mediates mRNA cap2 2'-O-ribose methylation to the 5'-cap structure of mRNAs. Methylates the ribose of the second nucleotide of a m(7)GpppG-capped mRNA and small nuclear RNA (snRNA) (cap0) to produce m(7)GpppRmpNm (cap2). Recognizes a guanosine cap on RNA independently of its N(7) methylation status. Displays cap2 methylation on both cap0 and cap1. Displays a preference for cap1 RNAs.

**Gene ID:**

CMTR2

**Uniprot**

Q8IYT2

**Synonyms:**

Cap-specific mRNA (nucleoside-2'-O-)-methyltransferase 2 (EC 2.1.1.296) (Cap methyltransferase 2) (Cap2 2'O-ribose methyltransferase 2) (HMTr2) (MTr2) (Ftsl methyltransferase domain-containing protein 1) (Protein adrift homolog), CMTR2, AFT FTSJD1

**Immunogen:**

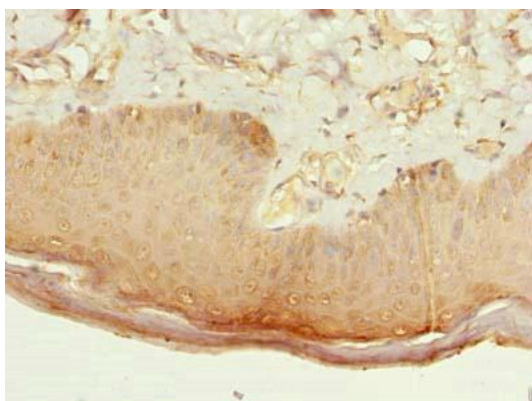
Recombinant Human Cap-specific mRNA (nucleoside-2'-O-)-methyltransferase 2 protein (301-600AA).

**Storage:**

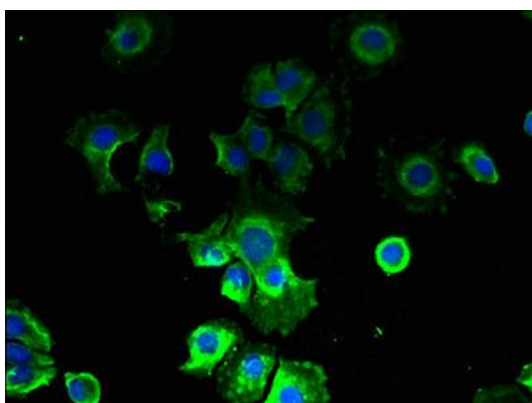
Preservative: 0.03% Proclin 300. Constituents: 50% Glycerol, 0.01M PBS, PH 7.4

## Product Images

---



Immunohistochemistry of paraffin-embedded human skin tissue using PACO37750 at dilution of 1:100.



Immunofluorescent analysis of MCF-7 cells using PACO37750 at dilution of 1:100 and Alexa Fluor 488-conjugated AffiniPure Goat Anti-Rabbit IgG(H+L).