

CPNE9 Antibody



PACO37746

Product Information

Size:

50ug

Reactivity:

Human

Source:

Rabbit

Isotype:

IgG

Applications:

ELISA, IHC

Recommended dilutions:

ELISA:1:2000-1:10000, IHC:1:20-1:200

Protein Background:

Probable calcium-dependent phospholipid-binding protein that may play a role in calcium-mediated intracellular processes. Plays a role in dendrite formation by melanocytes.

Gene ID:

CPNE9

Uniprot

Q8IYJ1

Synonyms:

Copine-9 (Copine IX), CPNE9

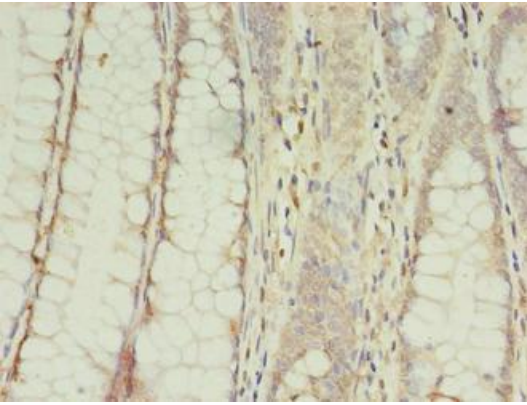
Immunogen:

Recombinant Human Copine-9 protein (22-272AA).

Storage:

Preservative: 0.03% Proclin 300. Constituents: 50% Glycerol, 0.01M PBS, PH 7.4

Product Images



Immunohistochemistry of paraffin-embedded human colon cancer using PACO37746 at dilution of 1:100.