

Product Information

Size:

50ug

Reactivity:

Human

Source:

Rabbit

Isotype:

IgG

Applications:

ELISA, IHC

Recommended dilutions:

ELISA:1:2000-1:10000, IHC:1:20-1:200

Protein Background:

Transcription factor required to direct islet cell differentiation during endocrine pancreas development. Specifically required for the differentiation of 4 of the 5 islet cell types and for the production of insulin. Not required for pancreatic PP (polypeptide-producing) cells differentiation. Acts downstream of NEUROG3 and regulates the transcription factors involved in beta-cell maturation and function, thereby restricting the expression of the beta-cell differentiation and specification genes, and thus the beta-cell fate choice. Activates transcription by forming a heterodimer with RFX3 and binding to the X-box in the promoter of target genes. Involved in glucose-stimulated insulin secretion by promoting insulin and L-type calcium channel gene transcription.

Gene ID:

RFX6

Uniprot

Q8HWS3

Synonyms:

DNA-binding protein RFX6 (Regulatory factor X 6) (Regulatory factor X domain-containing protein 1), RFX6, RFXDC1

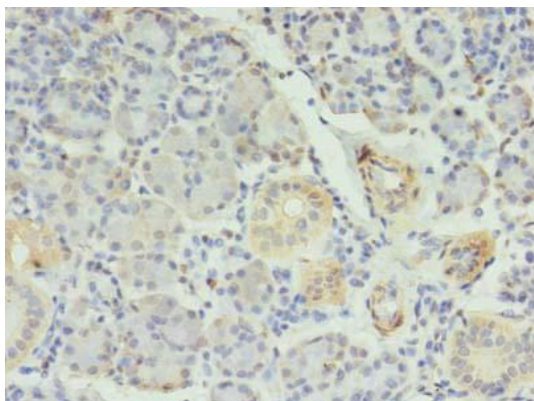
Immunogen:

Recombinant Human DNA-binding protein RFX6 protein (1-260AA).

Storage:

Preservative: 0.03% Proclin 300. Constituents: 50% Glycerol, 0.01M PBS, PH 7.4

Product Images



Immunohistochemistry of paraffin-embedded human pancreatic tissue using PACO37726 at dilution of 1:100.