

EGFL6 Antibody



PACO37690

Product Information

Size:

50ug

Reactivity:

Human

Source:

Rabbit

Isotype:

IgG

Applications:

ELISA, WB, IHC

Recommended dilutions:

ELISA:1:2000-1:10000, WB:1:500-1:2000,
IHC:1:20-1:200

Protein Background:

May bind integrin alpha-8/beta-1 and play a role in hair follicle morphogenesis. Promotes matrix assembly.

Gene ID:

EGFL6

Uniprot

Q8IU8

Synonyms:

Epidermal growth factor-like protein 6 (EGF-like protein 6) (MAM and EGF domains-containing gene protein), EGFL6, MAEG

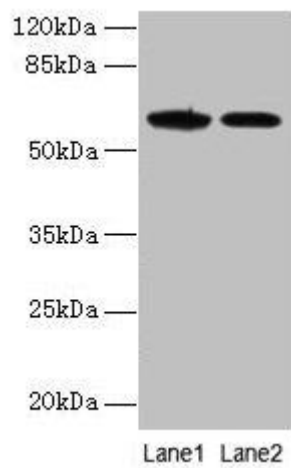
Immunogen:

Recombinant Human Epidermal growth factor-like protein 6 protein (301-554AA).

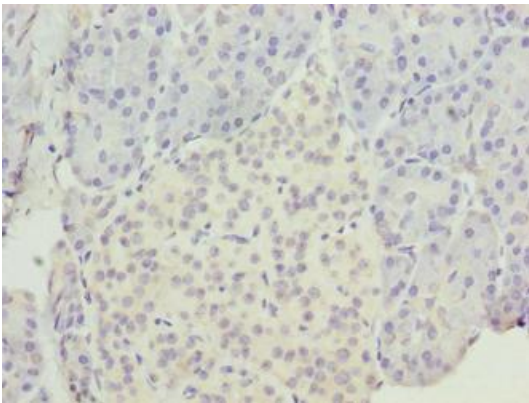
Storage:

Preservative: 0.03% Proclin 300. Constituents: 50% Glycerol, 0.01M PBS, PH 7.4

Product Images



Western blot. All lanes: EGFL6 antibody at 6 μ g/ml. Lane 1: K562 whole cell lysate. Lane 2: Jurkat whole cell lysate. Secondary: Goat polyclonal to rabbit IgG at 1/10000 dilution. Predicted band size: 62 kDa. Observed band size: 62 kDa.



Immunohistochemistry of paraffin-embedded human pancreatic tissue using PACO37690 at dilution of 1:100.