

# NIM1K Antibody



PACO37674

---

## Product Information

**Size:**

50ug

**Reactivity:**

Human

**Source:**

Rabbit

**Isotype:**

IgG

**Applications:**

ELISA, WB, IHC

**Recommended dilutions:**

ELISA:1:2000-1:10000, WB:1:1000-1:5000,  
IHC:1:20-1:200

**Protein Background:**

**Gene ID:**

NIM1K

**Uniprot**

Q8IY84

**Synonyms:**

Serine/threonine-protein kinase NIM1 (EC 2.7.11.1) (NIM1 serine/threonine-protein kinase), NIM1K, NIM1

**Immunogen:**

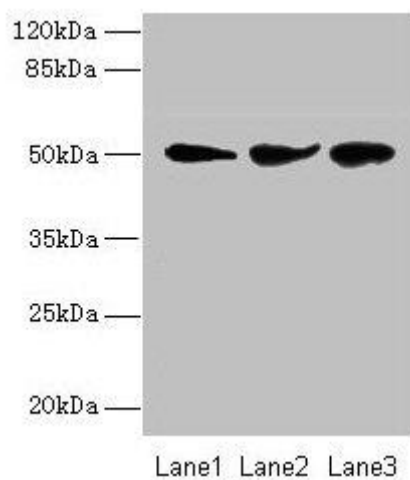
Recombinant Human Serine/threonine-protein kinase NIM1 protein (1-436AA).

**Storage:**

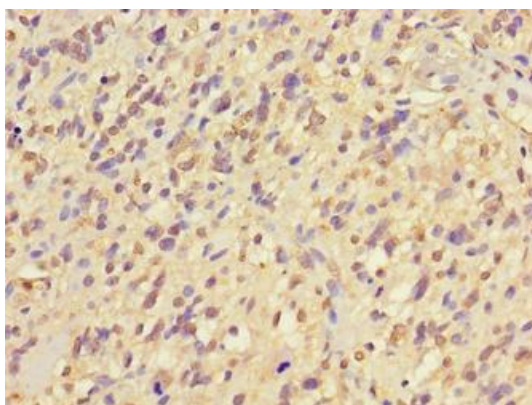
Preservative: 0.03% Proclin 300. Constituents: 50% Glycerol, 0.01M PBS, PH 7.4

## Product Images

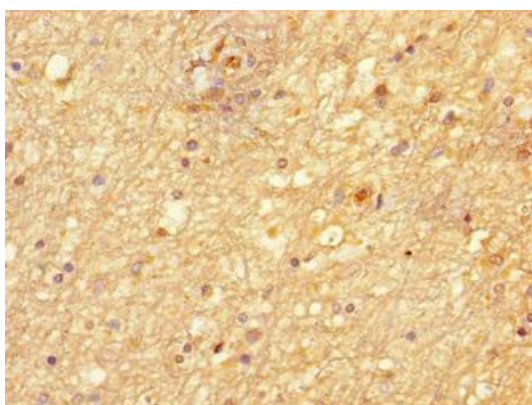
---



Western blot. All lanes: NIM1K antibody at 2 $\mu$ g/ml. Lane 1: Jurkat whole cell lysate. Lane 2: HepG2 whole cell lysate. Lane 3: COLO205 whole cell lysate. Secondary. Goat polyclonal to rabbit IgG at 1/10000 dilution. Predicted band size: 50 kDa. Observed band size: 50 kDa.



Immunohistochemistry of paraffin-embedded human glioma using PACO37674 at dilution of 1:100.



Immunohistochemistry of paraffin-embedded human brain tissue using PACO37674 at dilution of 1:100.