

Product Information

Size:

50ug

Reactivity:

Human

Source:

Rabbit

Isotype:

IgG

Applications:

ELISA, IHC

Recommended dilutions:

ELISA:1:2000-1:10000, IHC:1:20-1:200

Protein Background:

Binds to MYC and inhibits MYC-mediated transactivation. Also binds to MYCN and enhances MYCN-dependent transcriptional activation. Increases calpain 2-mediated proteolysis of YY1 in vitro. Component of the E2F6.com-1 complex, a repressive complex that methylates 'Lys-9' of histone H3, suggesting that it is involved in chromatin-remodeling.

Gene ID:

YAF2

Uniprot

Q8IY57

Synonyms:

YY1-associated factor 2, YAF2

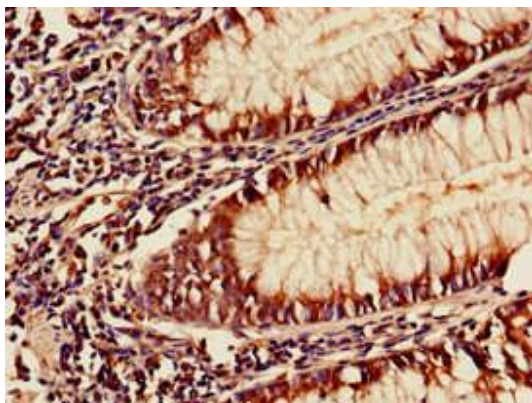
Immunogen:

Recombinant Human YY1-associated factor 2 protein (1-204AA).

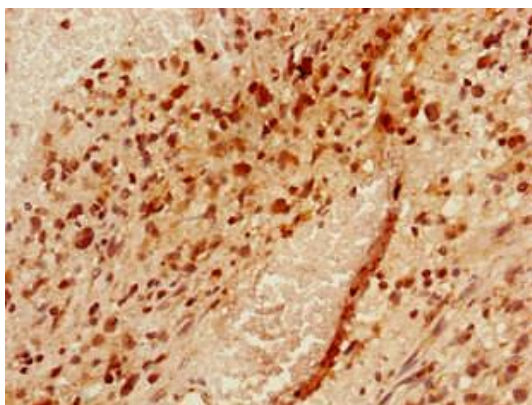
Storage:

Preservative: 0.03% Proclin 300. Constituents: 50% Glycerol, 0.01M PBS, PH 7.4

Product Images



Immunohistochemistry of paraffin-embedded human colon cancer using PACO37670 at dilution of 1:100.



Immunohistochemistry of paraffin-embedded human glioma using PACO37670 at dilution of 1:100.