

WDR49 Antibody



PACO37662

Product Information

Size:

50ug

Reactivity:

Human

Source:

Rabbit

Isotype:

IgG

Applications:

ELISA, WB, IHC

Recommended dilutions:

ELISA:1:2000-1:10000, WB:1:500-1:2000,
IHC:1:20-1:200

Protein Background:

Gene ID:

WDR49

Uniprot

Q8IV35

Synonyms:

WD repeat-containing protein 49, WDR49

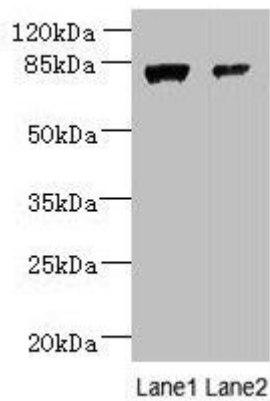
Immunogen:

Recombinant Human WD repeat-containing protein 49 protein (251-500AA).

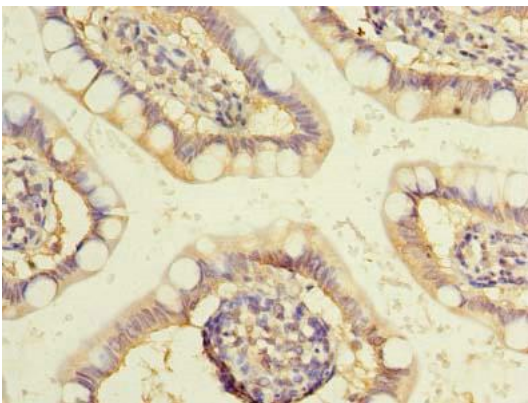
Storage:

Preservative: 0.03% Proclin 300. Constituents: 50% Glycerol, 0.01M PBS, PH 7.4

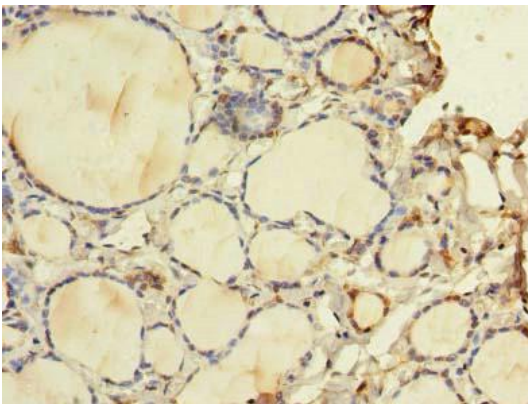
Product Images



Western blot. All lanes: WDR49 antibody at 7 μ g/ml. Lane 1: A549 whole cell lysate. Lane 2: Hela whole cell lysate. Secondary: Goat polyclonal to rabbit IgG at 1/10000 dilution. Predicted band size: 80, 60 kDa. Observed band size: 80 kDa.



Immunohistochemistry of paraffin-embedded human small intestine tissue using PACO37662 at dilution of 1:100.



Immunohistochemistry of paraffin-embedded human thyroid tissue using PACO37662 at dilution of 1:100.