

PACO37638

---

## Product Information

**Size:**

50ug

**Reactivity:**

Human

**Source:**

Rabbit

**Isotype:**

IgG

**Applications:**

ELISA, IHC

**Recommended dilutions:**

ELISA:1:2000-1:10000, IHC:1:20-1:200

**Protein Background:**

May play a role in regulating cell adhesion/migration complexes in migrating cells.

**Gene ID:**

SCYL3

**Uniprot**

Q8IZE3

**Synonyms:**

Protein-associating with the carboxyl-terminal domain of ezrin (Ezrin-binding protein PACE-1) (SCY1-like protein 3), SCYL3, PACE1

**Immunogen:**

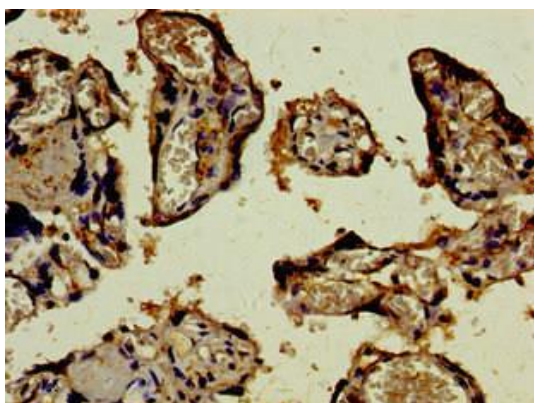
Recombinant Human Protein-associating with the carboxyl-terminal domain of ezrin protein (1-688AA).

**Storage:**

Preservative: 0.03% Proclin 300. Constituents: 50% Glycerol, 0.01M PBS, PH 7.4

## Product Images

---



Immunohistochemistry of paraffin-embedded human placenta tissue using PACO37638 at dilution of 1:100.