

KATNAL2 Antibody



PACO37634

Product Information

Size:

50ug

Reactivity:

Human

Source:

Rabbit

Isotype:

IgG

Applications:

ELISA, WB, IHC

Recommended dilutions:

ELISA:1:2000-1:10000, WB:1:500-1:2000,
IHC:1:20-1:200

Protein Background:

Severs microtubules in vitro in an ATP-dependent manner. This activity may promote rapid reorganization of cellular microtubule arrays.

Gene ID:

KATNAL2

Uniprot

Q8IYT4

Synonyms:

Katanin p60 ATPase-containing subunit A-like 2 (Katanin p60 subunit A-like 2) (EC 3.6.4.3) (p60 katanin-like 2), KATNAL2

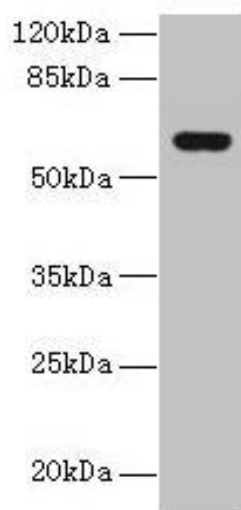
Immunogen:

Recombinant Human Katanin p60 ATPase-containing subunit A-like 2 protein (18-307AA).

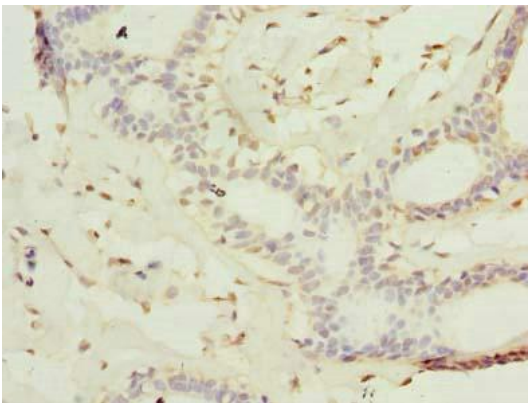
Storage:

Preservative: 0.03% Proclin 300. Constituents: 50% Glycerol, 0.01M PBS, PH 7.4

Product Images



Western blot. All lanes: KATNAL2 antibody at 1 μ g/ml + U251 whole cell lysate. Secondary. Goat polyclonal to rabbit IgG at 1/10000 dilution. Predicted band size: 62, 53 kDa. Observed band size: 62 kDa.



Immunohistochemistry of paraffin-embedded human breast cancer using PACO37634 at dilution of 1:100.