

SLC35F2 Antibody



PACO37622

Product Information

Size:

50ug

Reactivity:

Human

Source:

Rabbit

Isotype:

IgG

Applications:

ELISA, IHC, IF

Recommended dilutions:

ELISA:1:2000-1:10000, IHC:1:20-1:200,
IF:1:50-1:200

Protein Background:

Putative solute transporter.

Gene ID:

SLC35F2

Uniprot

Q8IXU6

Synonyms:

Solute carrier family 35 member F2, SLC35F2

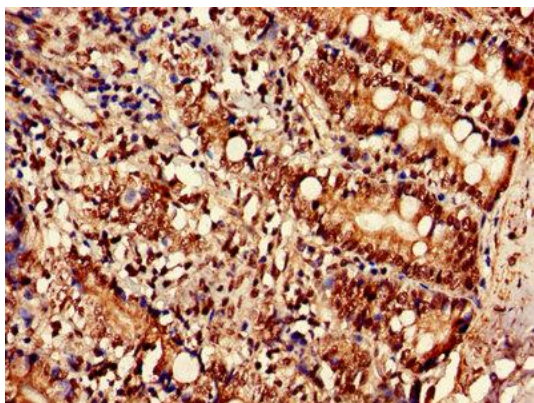
Immunogen:

Recombinant Human Solute carrier family 35 member F2 protein (335-374AA).

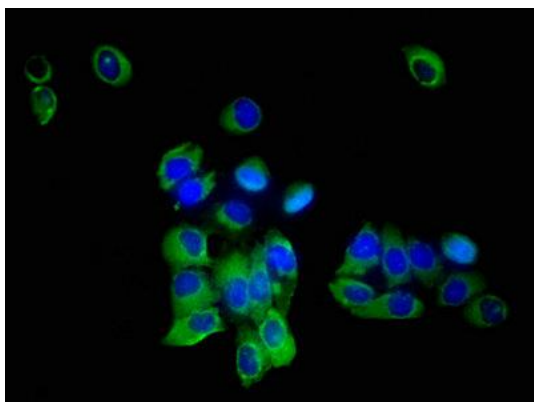
Storage:

Preservative: 0.03% Proclin 300. Constituents: 50% Glycerol, 0.01M PBS, PH 7.4

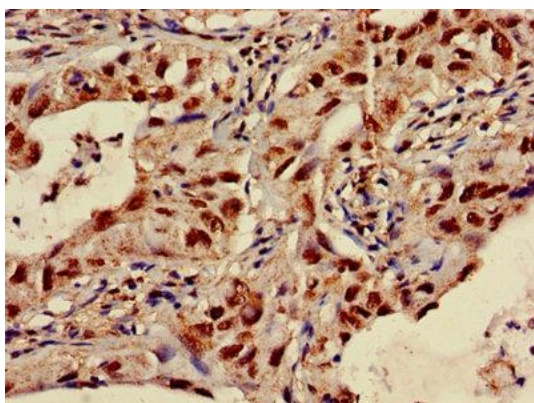
Product Images



Immunohistochemistry of paraffin-embedded human small intestine tissue using PACO37622 at dilution of 1:100.



Immunofluorescent analysis of A549 cells using PACO37622 at dilution of 1:100 and Alexa Fluor 488-conjugated AffiniPure Goat Anti-Rabbit IgG(H+L).



Immunohistochemistry of paraffin-embedded human lung cancer using PACO37622 at dilution of 1:100.