

PACO37586

Product Information

Size:

50ug

Reactivity:

Mouse

Source:

Rabbit

Isotype:

IgG

Applications:

ELISA, WB

Recommended dilutions:

ELISA:1:2000-1:10000, WB:1:1000-1:5000

Protein Background:

Probable effector of the planar cell polarity signaling pathway which regulates the septin cytoskeleton in both ciliogenesis and collective cell movements By similarity.

Gene ID:

Wdpcp

Uniprot

Q8C456

Synonyms:

WD repeat-containing and planar cell polarity effector protein fritz homolog (mFrtz) (Homolog-13) (WD repeat-containing and planar cell polarity effector protein), Wdpcp

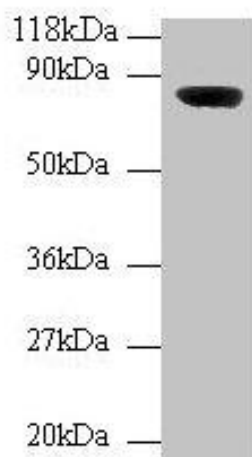
Immunogen:

Recombinant Mouse WD repeat-containing and planar cell polarity effector protein fritz homolog protein (1-722AA).

Storage:

Preservative: 0.03% Proclin 300. Constituents: 50% Glycerol, 0.01M PBS, PH 7.4

Product Images



Western blot. All lanes: Wdpcp antibody at 2 μ g/ml + Mouse brain tissue. Secondary. Goat polyclonal to rabbit IgG at 1/10000 dilution. Predicted band size: 82, 73 kDa. Observed band size: 82 kDa.