

# ZGRF1 Antibody



PACO37574

---

## Product Information

**Size:**

50ug

**Reactivity:**

Human

**Source:**

Rabbit

**Isotype:**

IgG

**Applications:**

ELISA, IF

**Recommended dilutions:**

ELISA:1:2000-1:10000, IF:1:50-1:200

**Protein Background:**

**Gene ID:**

ZGRF1

**Uniprot**

Q86YA3

**Synonyms:**

Protein ZGRF1 (GRF-type zinc finger domain-containing protein 1), ZGRF1, C4orf21

**Immunogen:**

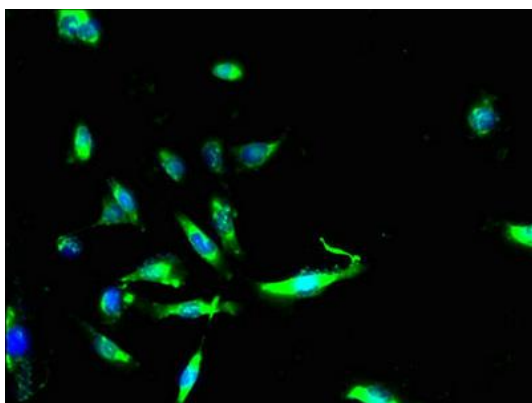
Recombinant Human Protein ZGRF1 protein (3-302AA).

**Storage:**

Preservative: 0.03% Proclin 300. Constituents: 50% Glycerol, 0.01M PBS, PH 7.4

## Product Images

---



Immunofluorescent analysis of U251 cells using PACO37574 at dilution of 1:100 and Alexa Fluor 488-conjugated AffiniPure Goat Anti-Rabbit IgG(H+L).