

SETX Antibody



PACO37494

Product Information

Size:

50ug

Reactivity:

Human

Source:

Rabbit

Isotype:

IgG

Applications:

ELISA, IHC

Recommended dilutions:

ELISA:1:2000-1:10000, IHC:1:20-1:200

Protein Background:

Gene ID:

SETX

Uniprot

Q7Z333

Synonyms:

Probable helicase senataxin (EC 3.6.4. -) (Amyotrophic lateral sclerosis 4 protein) (SEN1 homolog) (Senataxin), SETX, ALS4 KIAA0625 SCAR1

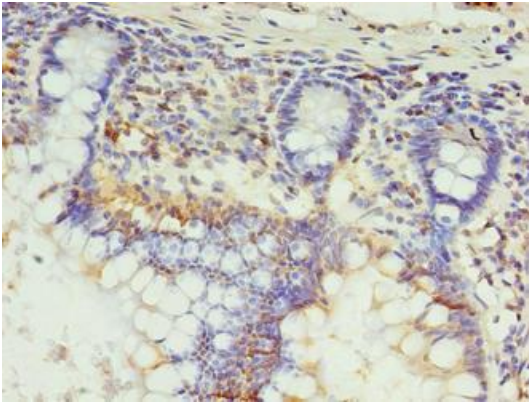
Immunogen:

Recombinant Human Probable helicase senataxin protein (2401-2677AA).

Storage:

Preservative: 0.03% Proclin 300. Constituents: 50% Glycerol, 0.01M PBS, PH 7.4

Product Images



Immunohistochemistry of paraffin-embedded human small intestine tissue using PACO37494 at dilution of 1:100.