

PID1 Antibody



PACO37490

Product Information

Size:

50ug

Reactivity:

Human

Source:

Rabbit

Isotype:

IgG

Applications:

ELISA, IHC, IF

Recommended dilutions:

ELISA:1:2000-1:10000, IHC:1:20-1:200,
IF:1:50-1:200

Protein Background:

Increases proliferation of preadipocytes without affecting adipocytic differentiation.

Gene ID:

PID1

Uniprot

Q7Z2X4

Synonyms:

PTB-containing, cubilin and LRP1-interacting protein (P-CLI1) (Phosphotyrosine interaction domain-containing protein 1) (Protein NYGGF4), PID1, NYGGF4 PCLI1

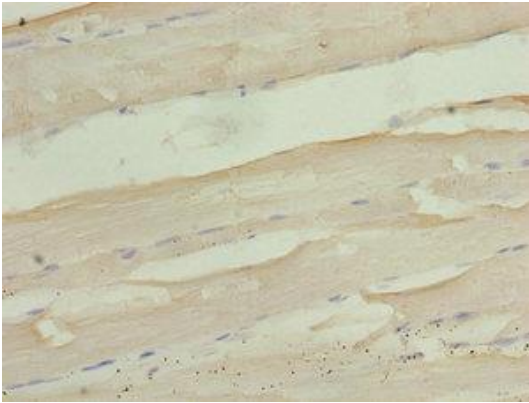
Immunogen:

Recombinant Human PTB-containing, cubilin and LRP1-interacting protein (15-168AA).

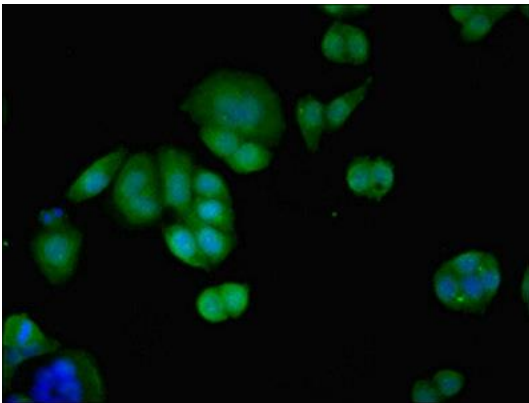
Storage:

Preservative: 0.03% Proclin 300. Constituents: 50% Glycerol, 0.01M PBS, PH 7.4

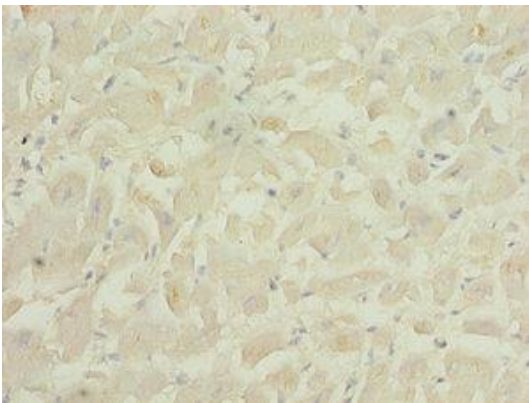
Product Images



Immunohistochemistry of paraffin-embedded human skeletal muscle tissue using PACO37490 at dilution of 1:100.



Immunofluorescent analysis of PC-3 cells using PACO37490 at dilution of 1:100 and Alexa Fluor 488-conjugated AffiniPure Goat Anti-Rabbit IgG(H+L).



Immunohistochemistry of paraffin-embedded human heart tissue using PACO37490 at dilution of 1:100.