

KRT73 Antibody



PACO37482

Product Information

Size:

50ug

Reactivity:

Human

Source:

Rabbit

Isotype:

IgG

Applications:

ELISA, WB

Recommended dilutions:

ELISA:1:2000-1:10000, WB:1:1000-1:5000

Protein Background:

Has a role in hair formation. Specific component of keratin intermediate filaments in the inner root sheath (IRS) of the hair follicle (Probable).

Gene ID:

KRT73

Uniprot

Q86Y46

Synonyms:

Keratin, type II cytoskeletal 73 (Cytokeratin-73) (CK-73) (Keratin-73) (K73) (Type II inner root sheath-specific keratin-K6irs3) (Type-II keratin Kb36), KRT73, K6IRS3 KB36 KRT6IRS3

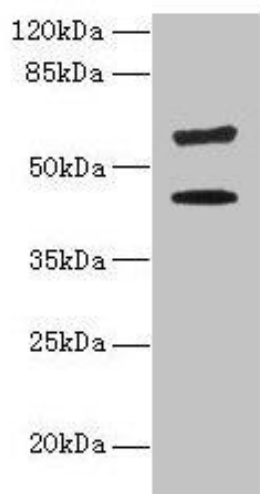
Immunogen:

Recombinant Human Keratin, type II cytoskeletal 73 protein (1-300AA).

Storage:

Preservative: 0.03% Proclin 300. Constituents: 50% Glycerol, 0.01M PBS, PH 7.4

Product Images



Western blot. All lanes: KRT73 antibody at 4 μ g/ml + HepG2 whole cell lysate. Secondary. Goat polyclonal to rabbit IgG at 1/10000 dilution. Predicted band size: 59, 42 kDa. Observed band size: 59, 42 kDa.