

PACO37474

---

## Product Information

**Size:**

50ug

**Reactivity:**

Human

**Source:**

Rabbit

**Isotype:**

IgG

**Applications:**

ELISA, IHC

**Recommended dilutions:**

ELISA:1:2000-1:10000, IHC:1:20-1:200

**Protein Background:**

May modulate activity of cullin-RING E3 ubiquitin ligase (CRL) complexes. May down-regulate activation of NF-kappa-B.

**Gene ID:**

COMMD2

**Uniprot**

Q86X83

**Synonyms:**

COMM domain-containing protein 2, COMMD2

**Immunogen:**

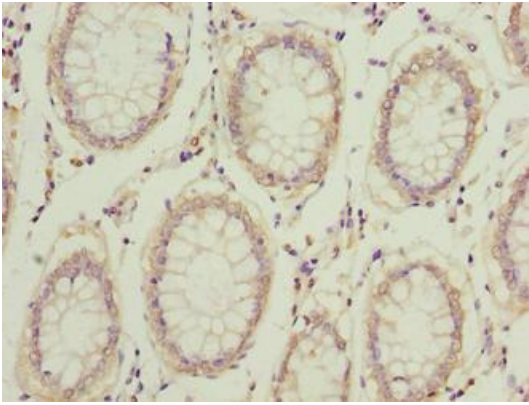
Recombinant Human COMM domain-containing protein 2 protein (5-199AA).

**Storage:**

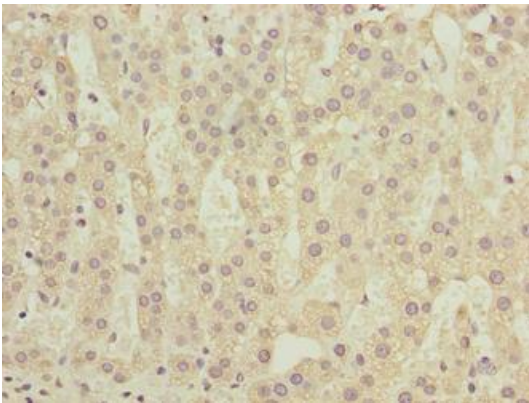
Preservative: 0.03% Proclin 300. Constituents: 50% Glycerol, 0.01M PBS, PH 7.4

## Product Images

---



Immunohistochemistry of paraffin-embedded human colon cancer using PACO37474 at dilution of 1:100.



Immunohistochemistry of paraffin-embedded human adrenal gland tissue using PACO37474 at dilution of 1:100.