

Product Information

Size:

50ug

Reactivity:

Human

Source:

Rabbit

Isotype:

IgG

Applications:

ELISA, IHC

Recommended dilutions:

ELISA:1:2000-1:10000, IHC:1:20-1:200

Protein Background:

Core histones chaperone involved in chromatin reprogramming, specially during fertilization and early embryonic development. Probably involved in sperm DNA decondensation during fertilization.

Gene ID:

NPM2

Uniprot

Q86SE8

Synonyms:

Nucleoplasmin-2, NPM2

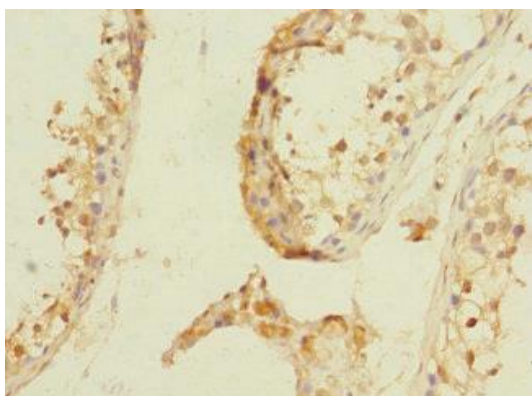
Immunogen:

Recombinant Human Nucleoplasmin-2 protein (1-136AA).

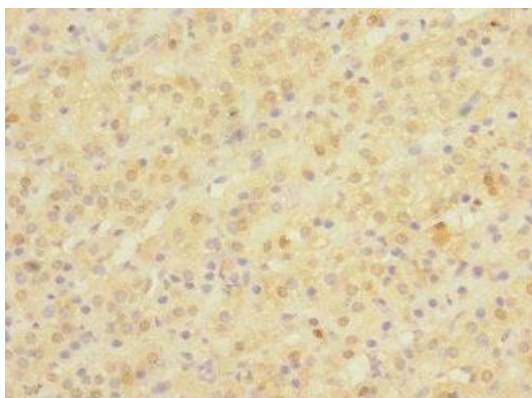
Storage:

Preservative: 0.03% Proclin 300. Constituents: 50% Glycerol, 0.01M PBS, PH 7.4

Product Images



Immunohistochemistry of paraffin-embedded human testis tissue using PACO37458 at dilution of 1:100.



Immunohistochemistry of paraffin-embedded human adrenal gland tissue using PACO37458 at dilution of 1:100.